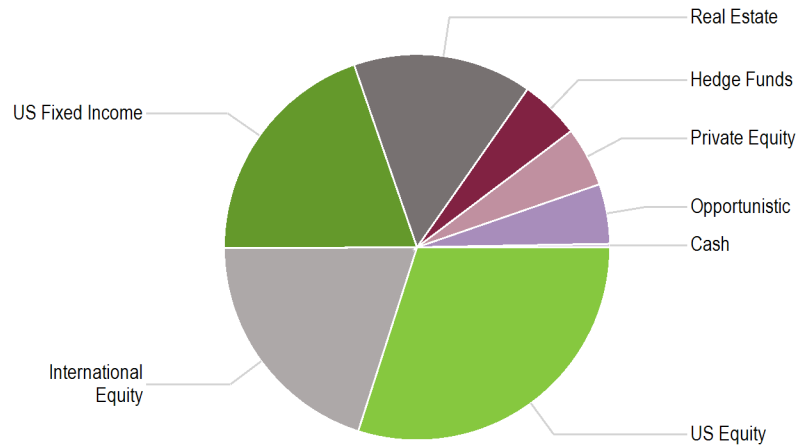


Total Plan

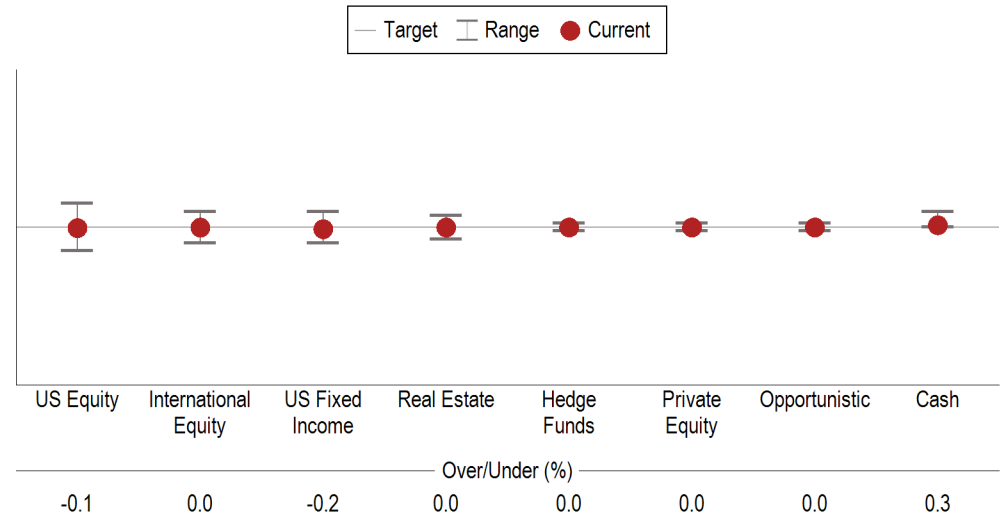
Total Plan with Overlay

Asset Allocation vs. Target

**Current Allocation
as of September 30, 2010**



**Actual vs. Target
as of September 30, 2010**

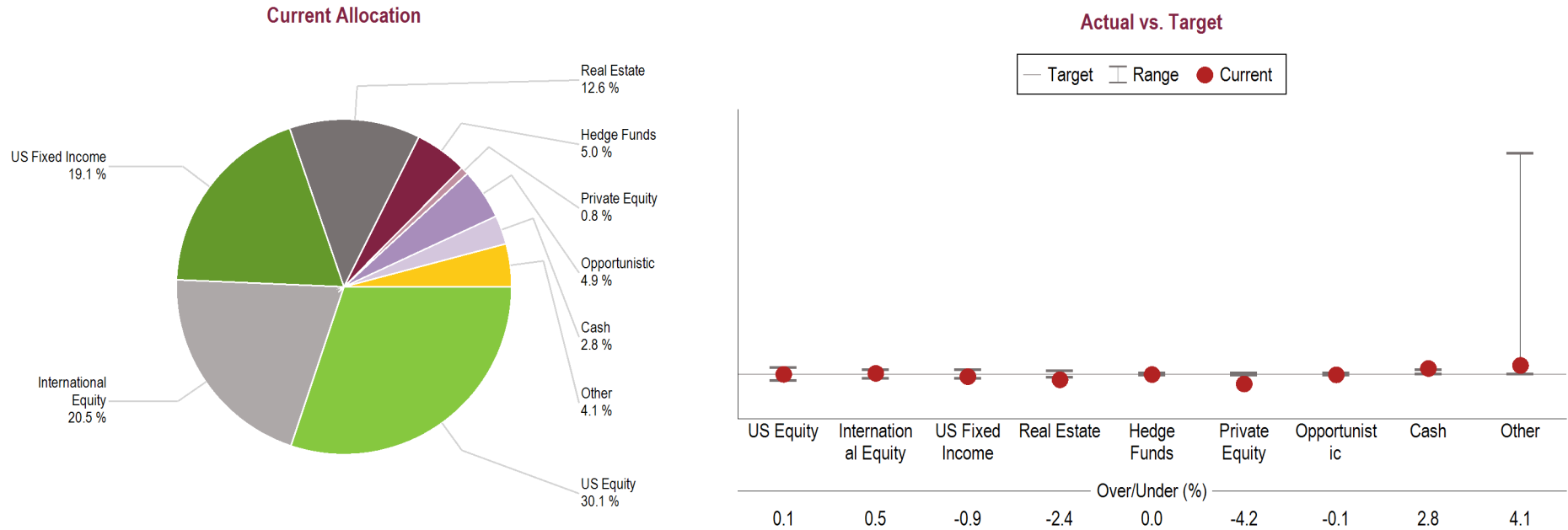


**Allocation vs. Targets and Policy
as of September 30, 2010**

	Current Balance	Current Allocation	Target Allocation	Difference	Target Ranges	Within IPS Range?
US Equity	\$1,671,422,174	29.9%	30.0%	-\$3,914,512	27.0% - 33.0%	Yes
International Equity	\$1,118,008,143	20.0%	20.0%	-\$559,216	18.0% - 22.0%	Yes
US Fixed Income	\$1,106,828,062	19.8%	20.0%	-\$11,743,535	18.0% - 22.0%	Yes
Real Estate	\$838,506,107	15.0%	15.0%	\$0	13.5% - 16.5%	Yes
Hedge Funds	\$279,502,036	5.0%	5.0%	\$0	4.5% - 5.5%	Yes
Private Equity	\$279,502,036	5.0%	5.0%	\$0	4.5% - 5.5%	Yes
Opportunistic	\$279,502,036	5.0%	5.0%	\$0	4.5% - 5.5%	Yes
Cash	\$16,770,122	0.3%	0.0%	\$16,217,263	0.0% - 2.0%	Yes
Total	\$5,590,040,715	100.0%	100.0%			

Total Plan excluding Overlay effects

Asset Allocation vs. Target



Allocation vs. Targets and Policy As of September 30, 2010

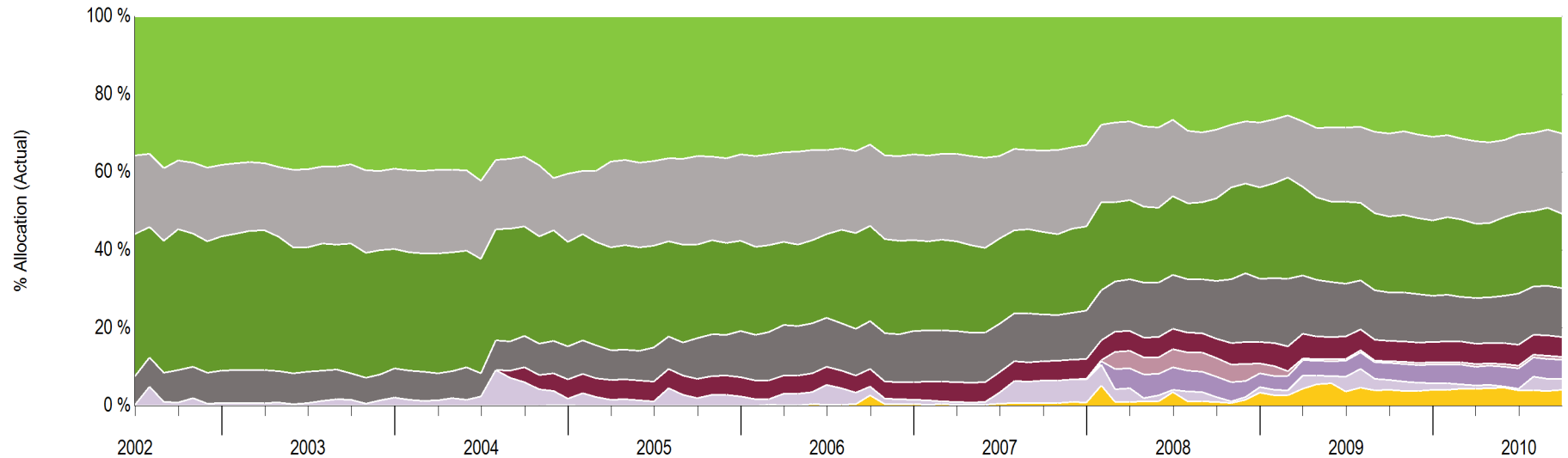
	Current Balance	Current Allocation	Target Allocation	Difference	Target Ranges	Within IPS Range?
US Equity	\$1,683,803,408	30.1%	30.0%	\$6,791,194	27.0% - 33.0%	Yes
International Equity	\$1,148,608,967	20.5%	20.0%	\$30,600,824	18.0% - 22.0%	Yes
US Fixed Income	\$1,066,134,140	19.1%	20.0%	-\$51,874,003	18.0% - 22.0%	Yes
Real Estate	\$706,773,843	12.6%	15.0%	-\$131,732,265	13.5% - 16.5%	No
Hedge Funds	\$281,560,158	5.0%	5.0%	\$2,058,122	4.5% - 5.5%	Yes
Private Equity	\$42,471,480	0.8%	5.0%	-\$237,030,556	4.5% - 5.5%	No
Opportunistic	\$273,750,582	4.9%	5.0%	-\$5,751,454	4.5% - 5.5%	Yes
Cash	\$155,806,572	2.8%	0.0%	\$155,806,572	0.0% - 2.0%	No
Other*	\$231,131,565	4.1%	--	\$231,131,565	--	No
Total	\$5,590,040,715	100.0%	100.0%			

*Other includes SSgA Overlay and Westridge Capital Management

Total Plan

Asset Allocation

Asset Allocation History
8 Years 3 Months Ending September 30, 2010



	37.1	38.1	37.7	39.2	38.0	39.2	39.4	42.2	36.0	40.4	37.3	37.2	35.9	35.4	34.9	34.3	32.9	35.5	35.3	35.9	34.5	33.1	27.0	26.5	29.2	27.2	27.0	28.5	30.1	30.9	32.0	30.4	30.1	
	17.6	18.4	17.2	20.1	20.4	20.6	21.5	20.1	18.0	17.5	22.1	21.6	22.7	22.3	23.0	21.6	20.9	22.0	22.5	21.2	20.9	20.9	20.2	19.7	17.7	16.8	16.8	19.1	21.4	21.5	21.2	20.0	20.5	
	36.2	34.5	35.9	31.9	33.3	30.6	30.8	29.4	28.0	26.9	26.4	26.2	24.1	23.1	21.4	21.5	24.5	23.3	23.0	21.8	21.1	21.7	20.3	20.2	21.1	23.5	22.7	21.1	19.5	19.3	19.2	20.9	19.1	
	8.3	8.4	8.6	8.1	6.8	7.5	6.9	6.0	8.1	8.5	7.6	8.8	10.5	11.9	12.9	12.6	12.4	13.1	13.2	12.5	12.0	12.4	13.3	13.8	14.9	16.1	15.1	13.5	12.4	11.9	11.7	13.0	12.6	
	--	--	--	--	--	--	--	--	3.8	4.9	5.0	5.0	4.9	4.8	4.7	4.7	4.4	4.4	5.1	5.2	4.9	5.1	5.1	5.3	5.0	5.6	6.2	5.8	5.3	5.3	5.2	5.4	5.0	
	--	--	--	--	--	--	--	--	--	--	--	--	--	--	--	--	--	--	--	--	--	0.1	4.5	4.5	4.8	2.5	0.5	0.5	0.4	0.5	0.6	0.8	0.8	
	--	--	--	--	--	--	--	--	--	--	--	--	--	--	--	--	--	--	--	--	--	--	0.0	5.1	5.8	5.2	3.5	3.9	4.0	4.4	4.8	4.9	5.2	4.9
	0.9	0.7	0.7	0.7	1.5	2.1	1.4	2.4	6.1	1.8	1.6	1.1	2.0	2.4	2.9	5.0	2.3	1.2	0.6	2.9	5.8	5.8	3.5	0.6	1.2	1.4	3.4	3.9	2.6	1.7	0.8	0.3	2.8	
	--	--	--	--	--	--	--	--	--	0.1	0.0	0.0	0.0	0.0	0.2	0.3	2.7	0.4	0.3	0.5	0.7	0.9	1.1	3.6	1.0	3.4	4.4	3.6	4.1	4.1	4.4	4.0	4.1	

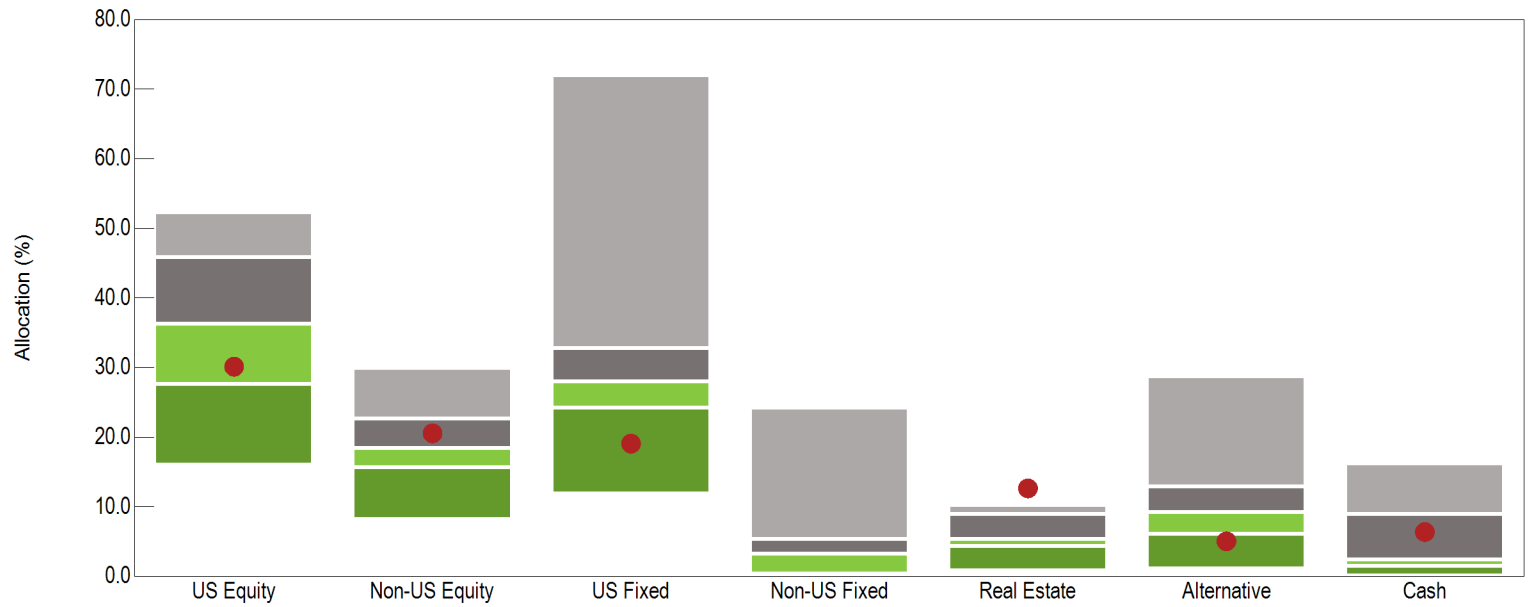
■ US Equity ■ Real Estate ■ Opportunistic
■ International Equity ■ Hedge Funds ■ Cash
■ US Fixed Income ■ Private Equity ■ Other *

*Other includes SSgA Overlay and Westridge Capital Management

Total Plan

Asset Allocation

Total Plan Allocation vs. Public Funds >\$1B
Ending September 30, 2010



Allocation (Rank)

5th Percentile	52.2	29.9	71.9	24.2	10.2	28.7	16.2
25th Percentile	45.8	22.7	32.8	5.3	9.0	12.9	9.0
Median	36.3	18.4	28.0	3.2	5.3	9.2	2.4
75th Percentile	27.6	15.6	24.2	0.4	4.3	6.0	1.5
95th Percentile	16.0	8.2	11.9	0.1	0.8	1.2	0.1
# of Portfolios	52	41	49	25	15	23	22
● Total Fund	30.1 (65)	20.5 (39)	19.1 (88)	-- (--)	12.6 (1)	5.0 (88)	6.4 (28)

Total Plan

Manager Allocation

Asset Allocation by Asset Class, Manager, and Target Policy

	Total Market Value	% of Portfolio	US Equity	International Equity	US Fixed Income	Real Estate	Hedge Funds	Private Equity	Opportunistic	Cash	Other *
Total Domestic Equity											
Total Large Cap											
Large Cap Core Index											
AllianceBernstein L.P. Passive	\$600,882,091	10.7%	\$600,882,091								
Enhanced Large Cap Core Index											
BlackRock Financial Mgmt	\$82,356,647	1.5%	\$82,356,647								
Equity Active Extension (130/30)											
JPMorgan Asset Management	\$59,504,020	1.1%	\$59,504,020								
UBS Global Asset Management	\$55,402,228	1.0%	\$55,402,228								
BlackRock	\$53,614,309	1.0%	\$53,614,309								
Large Cap Growth											
Wells Capital Management	\$109,745,687	2.0%	\$109,745,687								
Intech	\$116,744,105	2.1%	\$116,744,105								
Large Cap Value											
LSV Asset Management Large Cap Value	\$116,176,948	2.1%	\$116,176,948								
Pzena Investment Management	\$124,758,000	2.2%	\$124,758,000								
Total Small Cap											
Small Cap Growth											
M.A. Weatherbie	\$87,233,328	1.6%	\$87,233,328								
Turner Investment Partners, Inc.	\$91,535,861	1.6%	\$91,535,861								
Small Cap Value											
Dalton Greiner Hartman Maher	\$91,367,550	1.6%	\$91,367,550								
Wedge Capital Management	\$50,849,994	0.9%	\$50,849,994								
Thompson, Siegel & Walmsley	\$43,632,640	0.8%	\$43,632,640								
Total International Equity											
Bank of Ireland	\$1,852	0.0%		\$1,852							
Total International Equity-Established Markets											
INVESCO	\$263,543,141	4.7%		\$263,543,141							
Capital Guardian Trust Company International Equity	\$220,222,735	3.9%		\$220,222,735							
LSV Asset Management International Equity	\$204,708,276	3.7%		\$204,708,276							
MSCI ex-US Small Cap Transition Account **	\$345,444	0.0%		\$345,444							
William Blair	\$72,600,029	1.3%		\$72,600,029							
Mondrian Investment Partners	\$57,804,844	1.0%		\$57,804,844							

*Other includes SSgA Overlay and Westridge Capital Management

**This portfolio holds remaining assets from Axa Rosneberg when it transitioned to Mondrian Investment Partners. These assets were originated from corporate actions on a few legacy positions

Total Plan

Manager Allocation

	Total Market Value	% of Portfolio	US Equity	International Equity	US Fixed Income	Real Estate	Hedge Funds	Private Equity	Opportunistic	Cash	Other *
Total International Equity-Emerging Markets											
Capital Guardian Trust Company Emerging Markets Growth	\$329,382,646	5.9%		\$329,382,646							
Total Domestic Fixed Income											
Neuberger Investment Management	\$349,649,205	6.3%			\$349,649,205						
Metropolitan West Asset Mgmt	\$363,592,140	6.5%			\$363,592,140						
Bradford & Marzec, Inc	\$352,892,795	6.3%			\$352,892,795						
Total Hedge Fund											
Blackstone Alternative Asset	\$141,079,758	2.5%					\$141,079,758				
Grosvenor Capital Mgmt.	\$140,480,400	2.5%					\$140,480,400				
Total Real Estate											
Separate Account Portfolios											
BlackRock Realty Unleveraged											
BlackRock Realty Leveraged	\$166,179,027	3.0%				\$166,179,027					
BlackRock Realty Portfolio II Unleveraged											
BlackRock Realty Portfolio II Leveraged	\$88,441,190	1.6%				\$88,441,190					
Comerstone Real Est Adv Unleveraged											
Comerstone Real Est Adv Leveraged	\$123,926,583	2.2%				\$123,926,583					
Value Added											
UBS Realty Inv LLC Value Added	\$16,030,330	0.3%				\$16,030,330					
AEW Cap Mgmt Value Added	\$3,620,255	0.1%				\$3,620,255					
Hines Value Added	\$4,229,233	0.1%				\$4,229,233					
Limited Partnerships											
BlackRock Realty Granite Property Fund	\$38,088,481	0.7%				\$38,088,481					
Comerstone Real Est Adv Patriot Fund	\$58,709,237	1.1%				\$58,709,237					
Heitman Advisory JMB V	\$8,218	0.0%				\$8,218					
REITS											
Principal Global Investors	\$49,836,752	0.9%				\$49,836,752					
Urdang Investment Mgmt. Inc.	\$53,789,585	1.0%				\$53,789,585					
CB Richard Ellis Global	\$103,914,952	1.9%				\$103,914,952					
Private Equity											
HarbourVest	\$23,187,764	0.4%						\$23,187,764			
Goldman Sachs & Company	\$13,158,258	0.2%						\$13,158,258			
Abbott Capital Management	\$5,003,004	0.1%						\$5,003,004			
Harbourvest International Private Equity	\$1,122,454	0.0%						\$1,122,454			
Opportunistic											
PIMCO Advisors Inst Services Distressed Mortgage Fund	\$41,277,467	0.7%							\$41,277,467		
European Credit Management	\$53,667,785	1.0%							\$53,667,785		

*Other includes SSgA Overlay and Westridge Capital Management

Total Plan

Manager Allocation

	Total Market Value	% of Portfolio	US Equity	International Equity	US Fixed Income	Real Estate	Hedge Funds	Private Equity	Opportunistic	Cash	Other *
State Street Global Advisors Real Asset Strategy	\$30,466,448	0.5%							\$30,466,448		
Stone Tower Capital	\$32,879,000	0.6%							\$32,879,000		
PIMCO TALF Investment and Recovery	\$2,431,135	0.0%							\$2,431,135		
METWEST Enhanced TALF	\$14,424,933	0.3%							\$14,424,933		
Commodities											
Neuberger Investment Management	\$38,645,977	0.7%							\$38,645,977		
Blackstone Alternatives Asset	\$59,957,838	1.1%							\$59,957,838		
Total Cash											
Cash	\$155,806,572	2.8%								\$155,806,572	
SSGA Overlay	\$200,845,470	3.6%									\$200,845,470
Westridge	\$30,286,095	0.5%									\$30,286,095
Total	\$5,590,040,715	100.0%	\$1,683,803,408	\$1,148,608,967	\$1,066,134,140	\$706,773,843	\$281,560,158	\$42,471,480	\$273,750,582	\$155,806,572	\$231,131,565
Difference from Target (%)			0.1%	0.5%	-0.9%	-2.4%	0.0%	-4.2%	-0.1%	2.8%	4.1%
Difference from Target (\$)			\$6,791,194	\$30,600,824	-\$51,874,003	-\$131,732,265	\$2,058,122	-\$237,030,556	-\$5,751,454	\$155,806,572	\$231,131,565

*Other includes SSgA Overlay and Westridge Capital Management

Total Plan - Gross

Performance Summary

Total Plan Performance

Name	Current Market Value	Current Allocation	Ending September 30, 2010												Inception	
			3 Mo	Rank	YTD	Rank	Fiscal YTD	Rank	1 Yr	Rank	3 Yrs	Rank	5 Yrs	Rank	Return	Since
Total Fund with SSGA Overlay *	\$5,590,040,715	100.0%	9.0%	39	6.4%	64	9.0%	39	9.4%	76	-0.9%	30	--	--	3.4%	Feb-06
<i>Total Benchmark</i>			9.4%	31	6.2%	72	9.4%	31	9.9%	64	-2.3%	63	3.9%	46	2.9%	Feb-06
<i>Public Funds >\$1B Median</i>			8.8%		7.0%		8.8%		10.4%		-1.8%		3.8%		--	Feb-06
Total Fund excluding Overlay effects **			9.7%	25	6.8%	54	9.7%	25	10.4%	50	-3.2%	81	3.3%	75	8.3%	Jun-86
<i>Total Benchmark</i>			9.4%	31	6.2%	72	9.4%	31	9.9%	64	-2.3%	63	3.9%	46	8.6%	Jun-86
<i>Public Funds >\$1B Median</i>			8.8%		7.0%		8.8%		10.4%		-1.8%		3.8%		8.4%	Jun-86
Total Domestic Equity	\$1,683,803,408	30.1%	11.3%	75	5.7%	43	11.3%	75	11.7%	48	-7.4%	81	0.1%	83	9.0%	Jun-86
<i>Russell 3000</i>			11.5%	61	4.8%	78	11.5%	61	11.0%	69	-6.6%	66	0.9%	59	8.8%	Jun-86
<i>Public Funds >\$1B - US Eq Median</i>			11.8%		5.5%		11.8%		11.6%		-6.2%		1.2%		--	Jun-86
Total Large Cap	\$1,319,184,036	23.6%	11.8%		4.5%		11.8%		10.6%		-8.1%		-0.1%		1.7%	Mar-98
<i>Russell 1000</i>			11.6%		4.4%		11.6%		10.8%		-6.8%		0.9%		2.4%	Mar-98
Large Cap Core Index	\$600,882,091	10.7%	11.4%		4.3%		11.4%		10.7%		--		--		2.0%	Sep-08
<i>Russell 1000</i>			11.6%		4.4%		11.6%		10.8%		-6.8%		0.9%		2.0%	Sep-08
AllianceBernstein L.P. Passive	\$600,882,091	10.7%	11.4%		4.3%		11.4%		10.7%		-6.7%		0.9%		8.8%	Mar-89
<i>Russell 1000</i>			11.6%		4.4%		11.6%		10.8%		-6.8%		0.9%		9.0%	Mar-89
Enhanced Large Cap Core Index ***	\$82,356,647	1.5%	11.5%		5.3%		11.5%		11.9%		--		--		-10.4%	Oct-08
<i>Russell 1000</i>			11.6%		4.4%		11.6%		10.8%		-6.8%		0.9%		2.0%	Oct-08

* Weighted average performance calculated using month-end adjusted asset class weights as provided by State Street. Starting this quarter, note that historical performance has been restated using index returns to compute the portfolio's performance. Prior to the third quarter of 2010, total plan composite returns were used.

** Calculated using underlying data (market values, transactions, cash flows). Includes assets in the Overlay account but does not take into account the Overlay's effect on asset allocation

*** Composite performance includes Westridge through June 30, 2009

Total Plan - Gross

Performance Summary

Name	Current Market Value	Current Allocation	Ending September 30, 2010								Inception	
			3 Mo Rank	YTD Rank	Fiscal YTD Rank	1 Yr Rank	3 Yrs Rank	5 Yrs Rank	Return	Since		
BlackRock Financial Mgmt <i>Russell 1000</i>	\$82,356,647	1.5%	11.5%	5.3%	11.5%	11.9%	--	--	-1.6%	Jul-08		
			11.6%	4.4%	11.6%	10.8%	-6.8%	0.9%	-2.2%	Jul-08		
Equity Active Extension (130/30) <i>Russell 1000</i>	\$168,520,558	3.0%	11.0%	1.5%	11.0%	7.7%	--	--	2.1%	Oct-08		
			11.6%	4.4%	11.6%	10.8%	-6.8%	0.9%	2.0%	Oct-08		
			11.1%									
JPMorgan Asset Management <i>S&P 500 Index (Total Return)</i> <i>Russell 1000</i>	\$59,504,020	1.1%	10.7%	3.1%	10.7%	10.7%	--	--	2.5%	Jul-08		
			11.3%	3.9%	11.3%	10.2%	-7.2%	0.6%	-2.5%	Jul-08		
			11.6%	4.4%	11.6%	10.8%	-6.8%	0.9%	-2.2%	Jul-08		
UBS Global Asset Management <i>Russell 1000</i>	\$55,402,228	1.0%	11.0%	-1.1%	11.0%	4.6%	--	--	-3.3%	Jul-08		
			11.6%	4.4%	11.6%	10.8%	-6.8%	0.9%	-2.2%	Jul-08		
BlackRock <i>S&P 500 Index (Total Return)</i>	\$53,614,309	1.0%	11.3%	2.5%	11.3%	7.9%	--	--	-5.0%	Jul-08		
			11.3%	3.9%	11.3%	10.2%	-7.2%	0.6%	-2.5%	Jul-08		
Large Cap Growth <i>Russell 1000 Growth</i>	\$226,489,792	4.1%	14.6%	5.9%	14.6%	14.2%	--	--	3.3%	Oct-08		
			13.0%	4.4%	13.0%	12.7%	-4.4%	2.1%	5.1%	Oct-08		
Wells Capital Management <i>Russell 1000 Growth</i>	\$109,745,687	2.0%	17.2%	5.3%	17.2%	13.4%	--	--	-7.6%	Apr-08		
			13.0%	4.4%	13.0%	12.7%	-4.4%	2.1%	-2.9%	Apr-08		
Intech <i>Russell 1000 Growth</i>	\$116,744,105	2.1%	12.2%	6.6%	12.2%	15.0%	-5.6%	--	-1.3%	Oct-06		
			13.0%	4.4%	13.0%	12.7%	-4.4%	2.1%	0.2%	Oct-06		

Total Plan - Gross

Performance Summary

Name	Current Market Value	Current Allocation	Ending September 30, 2010						Inception	
			3 Mo Rank	YTD Rank	Fiscal YTD Rank	1 Yr Rank	3 Yrs Rank	5 Yrs Rank	Return Since	
Large Cap Value	\$240,934,948	4.3%	11.1%	5.3%	11.1%	8.7%	--	--	2.2%	Oct-08
<i>Russell 1000 Value</i>			10.1%	4.5%	10.1%	8.9%	-9.4%	-0.5%	-1.3%	Oct-08
LSV Asset Management Large Cap Value	\$116,176,948	2.1%	11.1%	5.0%	11.1%	10.1%	-10.0%	-0.2%	3.3%	Oct-04
<i>Russell 1000 Value</i>			10.1%	4.5%	10.1%	8.9%	-9.4%	-0.5%	1.9%	Oct-04
Pzena Investment Management	\$124,758,000	2.2%	11.1%	5.7%	11.1%	7.3%	-11.0%	-2.7%	0.5%	Oct-04
<i>Russell 1000 Value</i>			10.1%	4.5%	10.1%	8.9%	-9.4%	-0.5%	1.9%	Oct-04
Total Small Cap	\$364,619,372	6.5%	9.4%	10.3%	9.4%	15.9%	-5.0%	0.7%	11.6%	Dec-90
<i>Russell 2000</i>			11.3%	9.1%	11.3%	13.3%	-4.3%	1.6%	10.1%	Dec-90
Small Cap Growth	\$178,769,188	3.2%	8.0%	8.9%	8.0%	14.1%	--	--	3.7%	Oct-08
<i>Russell 2000 Growth</i>			12.8%	10.2%	12.8%	14.8%	-3.7%	2.3%	3.7%	Oct-08
M.A. Weatherbie	\$87,233,328	1.6%	8.2%	11.9%	8.2%	17.9%	-1.2%	5.2%	9.3%	Dec-02
<i>Russell 2000 Growth</i>			12.8%	10.2%	12.8%	14.8%	-3.7%	2.3%	9.0%	Dec-02
Turner Investment Partners, Inc.	\$91,535,861	1.6%	--	--	--	--	--	--	6.4%	Jul-10
<i>Russell 2000 Growth</i>			12.8%	10.2%	12.8%	14.8%	-3.7%	2.3%	5.8%	Jul-10

Total Plan - Gross

Performance Summary

Name	Current Market Value	Current Allocation	Ending September 30, 2010										Inception			
			3 Mo	Rank	YTD	Rank	Fiscal YTD	Rank	1 Yr	Rank	3 Yrs	Rank	5 Yrs	Rank	Return	Since
Small Cap Value	\$185,850,184	3.3%	10.5%		11.4%		10.5%		17.3%		--		--	2.5%	Oct-08	
<i>Russell 2000 Value</i>			9.7%		7.9%		9.7%		11.8%		-5.0%		0.7%	-1.1%	Oct-08	
Dalton Greiner Hartman Maher	\$91,367,550	1.6%	11.5%		16.1%		11.5%		25.4%		1.5%		5.3%	9.5%	Dec-00	
<i>Russell 2000 Value</i>			9.7%		7.9%		9.7%		11.8%		-5.0%		0.7%	7.1%	Dec-00	
Wedge Capital Management	\$50,849,994	0.9%	10.8%		9.3%		10.8%		12.4%		--		--	0.1%	Apr-08	
<i>Russell 2000 Value</i>			9.7%		7.9%		9.7%		11.8%		-5.0%		0.7%	-1.7%	Apr-08	
Thompson, Siegel & Walmsley	\$43,632,640	0.8%	7.9%		4.7%		7.9%		8.1%		--		--	-4.5%	Apr-08	
<i>Russell 2000 Value</i>			9.7%		7.9%		9.7%		11.8%		-5.0%		0.7%	-1.7%	Apr-08	
Total International Equity	\$1,148,608,967	20.5%	16.0%	59	4.4%	61	16.0%	59	8.0%	71	-6.2%	27	5.6%	16	6.8%	Dec-87
<i>MSCI EAFE</i>			16.5%	46	1.1%	99	16.5%	46	3.3%	98	-9.5%	90	2.0%	96	5.2%	Dec-87
<i>MSCI AC World ex USA (Gross)</i>			16.7%	39	4.1%	65	16.7%	39	8.0%	71	-7.0%	54	4.7%	40	6.4%	Dec-87
<i>Public Funds >\$1B - Non-US Eq Median</i>			16.4%		5.0%		16.4%		8.8%		-6.8%		4.5%	--	Dec-87	
Total International Equity-Established Markets	\$819,224,469	14.7%	15.4%		2.0%		15.4%		4.0%		-8.8%		2.5%	3.3%	Mar-98	
<i>MSCI EAFE</i>			16.5%		1.1%		16.5%		3.3%		-9.5%		2.0%	3.3%	Mar-98	
INVESCO	\$263,543,141	4.7%	15.2%		-0.3%		15.2%		3.4%		-7.5%		3.1%	4.2%	Mar-05	
<i>MSCI EAFE</i>			16.5%		1.1%		16.5%		3.3%		-9.5%		2.0%	3.4%	Mar-05	

Total Plan - Gross

Performance Summary

Name	Current Market Value	Current Allocation	Ending September 30, 2010										Inception			
			3 Mo	Rank	YTD	Rank	Fiscal YTD	Rank	1 Yr	Rank	3 Yrs	Rank	5 Yrs	Rank	Return	Since
Capital Guardian Trust Company International Equity	\$220,222,735	3.9%	14.8%		2.9%		14.8%		6.3%		-8.5%		2.6%		1.3%	Dec-99
<i>MSCI EAFE</i>			16.5%		1.1%		16.5%		3.3%		-9.5%		2.0%		1.2%	Dec-99
<i>MSCI EAFE Growth</i>			16.6%		4.1%		16.6%		8.4%		-8.4%		2.8%		-0.8%	Dec-99
LSV Asset Management International Equity	\$204,708,276	3.7%	15.8%		-0.9%		15.8%		-2.4%		-12.6%		0.3%		2.1%	Dec-04
<i>MSCI EAFE</i>			16.5%		1.1%		16.5%		3.3%		-9.5%		2.0%		3.3%	Dec-04
<i>MSCI EAFE Value</i>			16.4%		-1.9%		16.4%		-1.7%		-10.7%		1.1%		2.6%	Dec-04
William Blair	\$72,600,029	1.3%	16.6%		15.3%		16.6%		21.2%		--		--		13.5%	Sep-08
<i>MSCI Small Cap World ex US</i>			17.8%		10.3%		17.8%		10.9%		-5.0%		3.6%		12.7%	Sep-08
Mondrian Investment Partners	\$57,804,844	1.0%	--		--		--		--		--		--		10.4%	Sep-10
<i>MSCI Small Cap World ex US</i>			17.8%		10.3%		17.8%		10.9%		-5.0%		3.6%		11.3%	Sep-10
Total International Equity-Emerging Markets	\$329,382,646	5.9%	17.5%		11.0%		17.5%		19.6%		1.2%		16.2%		10.8%	Jan-00
<i>MSCI Emerging Markets Investable Market Index</i>			18.3%		11.6%		18.3%		21.6%		1.5%		13.4%		10.9%	Jan-00
Capital Guardian Trust Company Emerging Markets Growth	\$329,382,646	5.9%	17.5%		11.0%		17.5%		19.6%		1.2%		16.2%		10.8%	Jan-00
<i>MSCI Emerging Markets Investable Market Index</i>			18.3%		11.6%		18.3%		21.6%		1.5%		13.4%		10.9%	Jan-00

Total Plan - Gross

Performance Summary

Name	Current Market Value	Current Allocation	Ending September 30, 2010										Inception			
			3 Mo	Rank	YTD	Rank	Fiscal YTD	Rank	1 Yr	Rank	3 Yrs	Rank	5 Yrs	Rank	Return	Since
Total Domestic Fixed Income	\$1,066,134,140	19.1%	3.6%	44	10.1%	27	3.6%	44	13.0%	20	9.7%	8	7.7%	6	8.2%	Jun-86
Barclays Capital Aggregate			2.5%	94	7.9%	89	2.5%	94	8.2%	98	7.4%	54	6.2%	59	7.4%	Jun-86
Public Funds >\$1B - US FI Median			3.5%		9.5%		3.5%		10.8%		7.5%		6.3%		--	Jun-86
Neuberger Investment Management	\$349,649,205	6.3%	2.9%		9.2%		2.9%		10.5%		8.6%		6.9%		7.7%	May-88
Barclays Capital Aggregate			2.5%		7.9%		2.5%		8.2%		7.4%		6.2%		7.5%	May-88
Metropolitan West Asset Mgmt	\$363,592,140	6.5%	3.8%		12.8%		3.8%		17.0%		11.1%		8.8%		7.6%	Dec-01
Barclays Capital Aggregate			2.5%		7.9%		2.5%		8.2%		7.4%		6.2%		5.9%	Dec-01
Bradford & Marzec, Inc	\$352,892,795	6.3%	4.2%		8.3%		4.2%		11.5%		9.3%		7.4%		8.5%	Jun-88
Barclays Capital Aggregate			2.5%		7.9%		2.5%		8.2%		7.4%		6.2%		7.4%	Jun-88
Total Hedge Fund	\$281,560,158	5.0%	4.9%		2.7%		4.9%		5.5%		-2.6%		2.6%		4.9%	Aug-04
T-BILLS + 5%			1.3%		3.8%		1.3%		5.1%		5.8%		7.4%		7.4%	Aug-04
CS Tremont Hedge Funds Long/Short Equity Index			6.5%		3.1%		6.5%		5.6%		0.4%		5.7%		7.5%	Aug-04
Blackstone Alternative Asset	\$141,079,758	2.5%	4.8%		3.4%		4.8%		7.1%		-2.6%		2.6%		5.4%	Aug-04
T-BILLS + 5%			1.3%		3.8%		1.3%		5.1%		5.8%		7.4%		7.4%	Aug-04
CS Tremont Hedge Funds Long/Short Equity Index			6.5%		3.1%		6.5%		5.6%		0.4%		5.7%		7.5%	Aug-04
Grosvenor Capital Mgmt.	\$140,480,400	2.5%	4.9%		2.0%		4.9%		4.0%		-2.6%		2.6%		4.3%	Aug-04
T-BILLS + 5%			1.3%		3.8%		1.3%		5.1%		5.8%		7.4%		7.4%	Aug-04
CS Tremont Hedge Funds Long/Short Equity Index			6.5%		3.1%		6.5%		5.6%		0.4%		5.7%		7.5%	Aug-04
Total Real Estate	\$706,773,843	12.6%	9.6%	1	11.5%	1	9.6%	1	8.9%	18	-8.8%	50	1.1%	69	6.1%	Sep-87
NCREIF Property Index			3.9%	75	8.1%	34	3.9%	75	5.8%	22	-4.6%	13	3.7%	28	6.9%	Sep-87
Public Funds >\$1B - Real Estate Median			5.2%		6.8%		5.2%		1.7%		-8.8%		3.1%		--	Sep-87

Total Plan - Gross

Performance Summary

Name	Current Market Value	Current Allocation	Ending September 30, 2010						Inception	
			3 Mo Rank	YTD Rank	Fiscal YTD Rank	1 Yr Rank	3 Yrs Rank	5 Yrs Rank	Return	Since
Separate Account Portfolios *	\$378,546,800	6.8%	7.3%	14.3%	7.3%	8.8%	--	--	-15.9%	Oct-08
<i>NCREIF Property Index</i>			3.9%	8.1%	3.9%	5.8%	-4.6%	3.7%	-9.2%	Oct-08
BlackRock Realty Unleveraged	--	--	7.0%	12.8%	7.0%	9.2%	-3.7%	4.3%	9.6%	Sep-95
<i>NCREIF Property Index</i>			3.9%	8.1%	3.9%	5.8%	-4.6%	3.7%	8.9%	Sep-95
BlackRock Realty Leveraged	\$166,179,027	3.0%	9.6%	18.2%	9.6%	9.9%	-9.9%	1.7%	7.7%	Dec-98
<i>NCREIF Property Index</i>			3.9%	8.1%	3.9%	5.8%	-4.6%	3.7%	7.9%	Dec-98
BlackRock Realty Portfolio II Unleveraged	--	--	4.1%	10.0%	4.1%	9.1%	-5.9%	2.0%	7.3%	Sep-00
<i>NCREIF Property Index</i>			3.9%	8.1%	3.9%	5.8%	-4.6%	3.7%	7.2%	Sep-00
BlackRock Realty Portfolio II Leveraged	\$88,441,190	1.6%	4.1%	10.0%	4.1%	9.1%	-6.1%	2.4%	8.4%	Jun-04
<i>NCREIF Property Index</i>			3.9%	8.1%	3.9%	5.8%	-4.6%	3.7%	6.4%	Jun-04
Cornerstone Real Est Adv Unleveraged	--	--	5.2%	11.4%	5.2%	7.6%	-4.8%	0.9%	2.7%	May-04
<i>NCREIF Property Index</i>			3.9%	8.1%	3.9%	5.8%	-4.6%	3.7%	6.9%	May-04
Cornerstone Real Est Adv Leveraged	\$123,926,583	2.2%	6.6%	12.9%	6.6%	6.8%	-11.3%	-2.4%	1.0%	Apr-04
<i>NCREIF Property Index</i>			3.9%	8.1%	3.9%	5.8%	-4.6%	3.7%	6.8%	Apr-04
Value Added **	\$23,879,818	0.4%	6.2%	-26.9%	6.2%	-33.9%			-46.6%	Oct-08
<i>NCREIF + 2%</i>			3.8%	3.4%	3.8%	0.5%	-2.7%	5.8%	-9.0%	Oct-08
UBS Realty Inv LLC Value Added	\$16,030,330	0.3%	7.2%	6.4%	7.2%	-11.5%	-29.9%	-	-17.9%	Oct-06
<i>NCREIF + 2%</i>			3.8%	3.4%	3.8%	0.5%	-2.7%	5.8%	2.1%	Oct-06
AEW Cap Mgmt Value Added	\$3,620,255	0.1%	3.9%	-2.0%	3.9%	-14.1%	-23.8%	--	-21.6%	May-07
<i>NCREIF + 2%</i>			3.8%	3.4%	3.8%	0.5%	-2.7%	5.8%	-0.6%	May-07

*Market values and quarterly performance provided by respective investment managers.

**Market values, fund returns, and index returns are one quarter in arrears. Effective second quarter 2010, historical and current performance was provided by the respective investment managers.

Total Plan - Gross

Performance Summary

Name	Current Market Value	Current Allocation	Ending September 30, 2010								Inception	
			3 Mo Rank	YTD Rank	Fiscal YTD Rank	1 Yr Rank	3 Yrs Rank	5 Yrs Rank	Return	Since		
Hines Value Added NCREIF + 2%	\$4,229,233	0.1%	4.5%	-71.3%	4.5%	-70.7%	-52.4%	--	-50.5%	Jul-07		
			3.8%	3.4%	3.8%	0.5%	-2.7%	5.8%	-1.5%	Jul-07		
Limited Partnerships *	\$96,805,935	1.7%	4.3%	9.0%	4.3%	2.8%	--	--	-20.6%	Oct-08		
NCREIF NFI ODCE			5.5%	10.8%	5.5%	7.0%	-10.6%	-0.1%	-16.7%	Oct-08		
BlackRock Realty Granite Property Fund NCREIF NFI ODCE	\$38,088,481	0.7%	6.7%	10.2%	6.7%	0.1%	-18.2%	--	-5.2%	Nov-05		
			5.5%	10.8%	5.5%	7.0%	-10.6%	-0.1%	-0.8%	Nov-05		
Cornerstone Real Est Adv Patriot Fund NCREIF NFI ODCE	\$58,709,237	1.1%	2.8%	8.4%	2.8%	4.8%	-9.7%	0.4%	3.5%	Sep-04		
			5.5%	10.8%	5.5%	7.0%	-10.6%	-0.1%	2.9%	Sep-04		
Heitman Advisory JMB V NCREIF Property Index	\$8,218	0.0%	0.0%	0.1%	0.0%	0.1%	1.0%	4.5%	10.7%	Mar-91		
			3.9%	8.1%	3.9%	5.8%	-4.6%	3.7%	7.0%	Mar-91		
REITS	\$207,541,289	3.7%	17.5%	14.9%	17.5%	21.4%	--	--	1.7%	Oct-08		
FTSE NAREIT Equity REIT			12.8%	19.1%	12.8%	30.3%	-6.1%	1.9%	-3.4%	Oct-08		
Principal Global Investors FTSE NAREIT Equity REIT	\$49,836,752	0.9%	13.4%	19.1%	13.4%	30.3%	-3.0%	--	1.6%	Feb-06		
			12.8%	19.1%	12.8%	30.3%	-6.1%	1.9%	-0.2%	Feb-06		

*Market values and quarterly performance provided by respective investment managers.

Total Plan - Gross

Performance Summary

Name	Current Market Value	Current Allocation	Ending September 30, 2010								Inception					
			3 Mo	Rank	YTD	Rank	Fiscal YTD	Rank	1 Yr	Rank	3 Yrs	Rank	5 Yrs	Rank	Return	Since
Urdang Investment Mgmt. Inc. <i>FTSE NAREIT Equity REIT</i>	\$53,789,585	1.0%	14.5%		21.5%		14.5%		34.2%		-1.7%		--		3.3%	Feb-06
			12.8%		19.1%		12.8%		30.3%		-6.1%		1.9%		-0.2%	Feb-06
CB Richard Ellis Global <i>FTSE/EPRA NAREIT Global Developed ex-US</i>	\$103,914,952	1.9%	21.2%		9.9%		21.2%		12.2%		--		--		32.5%	Oct-08
			22.0%		10.3%		22.0%		12.4%		--		--		25.8%	Oct-08
Private Equity *	\$42,471,480	0.8%	-3.6%		-2.9%		-3.6%		-0.5%		--		--		-25.0%	Dec-07
HarbourVest <i>S&P 500 +2%</i>	\$23,187,764	0.4%	2.6%		9.0%		2.6%		13.8%		--		--		-1.8%	Dec-07
			-11.2%		0.5%		-11.2%		16.4%		-7.8%		1.2%		-9.3%	Dec-07
Goldman Sachs & Company <i>S&P 500 +2%</i>	\$13,158,258	0.2%	-13.7%		-17.0%		-13.7%		-15.2%		--		--		-43.8%	Jun-08
			-11.2%		0.5%		-11.2%		16.4%		-7.8%		1.2%		-6.4%	Jun-08
Abbott Capital Management <i>S&P 500 +2%</i>	\$5,003,004	0.1%	-2.4%		-7.4%		-2.4%		-11.5%		--		--		-18.8%	Jul-08
			-11.2%		0.5%		-11.2%		16.4%		-7.8%		1.2%		-8.7%	Jul-08
Harbourvest International Private Equity <i>S&P 500 +2%</i>	\$1,122,454	0.0%	4.8%		-46.9%		4.8%		-57.6%		--		--		-54.2%	Feb-09
			-11.2%		0.5%		-11.2%		16.4%		-7.8%		1.2%		13.8%	Feb-09
Opportunistic	\$273,750,582	4.9%	9.7%		12.1%		9.7%		21.6%		--		--		-2.3%	Oct-07
PIMCO Advisors Inst Services Distressed Mortgage** Fund <i>Barclays Capital Aggregate</i>	\$41,277,467	0.7%	14.0%		40.2%		14.0%		54.9%		--		--		10.1%	Oct-07
			2.5%		7.9%		2.5%		8.2%		7.4%		6.2%		7.3%	Oct-07
European Credit Management <i>Barclays Capital Aggregate</i>	\$53,667,785	1.0%	9.3%		17.9%		9.3%		25.4%		--		--		3.0%	Jan-08
			2.5%		7.9%		2.5%		8.2%		7.4%		6.2%		6.5%	Jan-08
State Street Global Advisors Real Asset Strategy <i>Blended Benchmark ***</i>	\$30,466,448	0.5%	10.7%		5.6%		10.7%		13.3%		--		--		-8.0%	Feb-08
			10.8%		5.9%		10.8%		13.5%		--		--		-5.0%	Feb-08

* Investment manager and index returns are one quarter in arrears

** Historical and current performance provided by investment manager.

*** The benchmark is a blend of 30% DJ Wilshire REIT, 25% S&P GSCI, 25% MSCI World Natural Resources, and 20% Barclays Capital US TIPS. Provided by SSgA

Total Plan - Gross

Performance Summary

Name	Current Market Value	Current Allocation	Ending September 30, 2010								Inception	
			3 Mo Rank	YTD Rank	Fiscal YTD Rank	1 Yr Rank	3 Yrs Rank	5 Yrs Rank	Return	Since		
Stone Tower Capital*	\$32,879,000	0.6%	1.9%	13.0%	1.9%	23.9%	--	--	29.0%	Feb-09		
<i>Barclays Capital Aggregate</i>			3.5%	5.5%	3.5%	9.5%	7.5%	5.5%	9.7%	Feb-09		
PIMCO TALF Investment and Recovery **	\$2,431,135	0.0%	2.1%	18.0%	2.1%	16.5%	--	--	23.0%	Jul-09		
<i>Barclays Capital Aggregate</i>			2.5%	7.9%	2.5%	8.2%	7.4%	6.2%	8.9%	Jul-09		
METWEST Enhanced TALF **	\$14,424,933	0.3%	5.5%	13.8%	5.5%	15.3%	--	--	17.6%	Jun-09		
<i>Barclays Capital Aggregate</i>			2.5%	7.9%	2.5%	8.2%	7.4%	6.2%	9.7%	Jun-09		
Commodities	\$98,603,814	1.8%	11.8%	1.3%	11.8%	11.8%	--	--	-10.5%	Apr-08		
Neuberger Investment Management	\$38,645,977	0.7%	12.1%	3.2%	12.1%	13.7%	--	--	-17.7%	Apr-08		
<i>Dow Jones UBS Commodity Index</i>			11.6%	0.9%	11.6%	10.0%	-6.8%	-2.3%	-14.7%	Apr-08		
Blackstone Alternatives Asset	\$59,957,838	1.1%	11.6%	0.1%	11.6%	10.6%	--	--	-2.7%	Apr-08		
<i>Dow Jones UBS Commodity Index</i>			11.6%	0.9%	11.6%	10.0%	-6.8%	-2.3%	-14.7%	Apr-08		
Total Cash	\$155,806,572	2.8%	0.1%	0.2%	0.1%	0.3%	0.6%	2.4%	4.2%	Jun-92		
<i>Citigroup 3mth Treasury Bill</i>			0.0%	0.1%	0.0%	0.1%	1.0%	2.5%	3.5%	Jun-92		
Cash	\$155,806,572	2.8%	0.1%	0.2%	0.1%	0.3%	1.1%	2.7%	4.3%	Jun-92		
<i>Citigroup 3mth Treasury Bill</i>			0.0%	0.1%	0.0%	0.1%	1.0%	2.5%	3.5%	Jun-92		
SSGA Overlay	\$200,845,470	3.6%										
Westridge	\$30,286,095	0.5%										

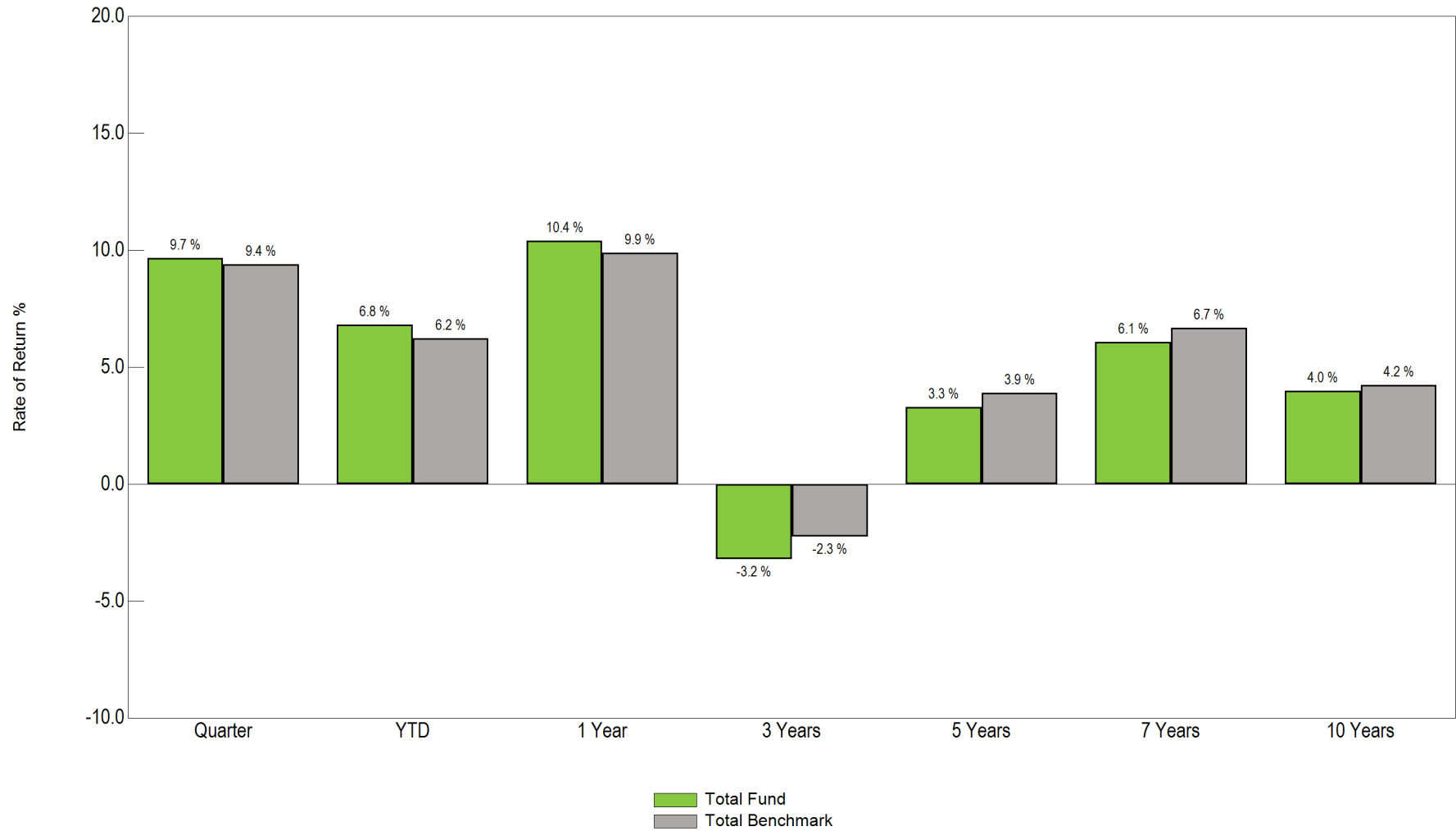
*Manager and Index returns are one quarter in arrears

**Effective second quarter 2010, historical and current performance was provided by the respective investment managers.

Total Plan - Gross

Performance

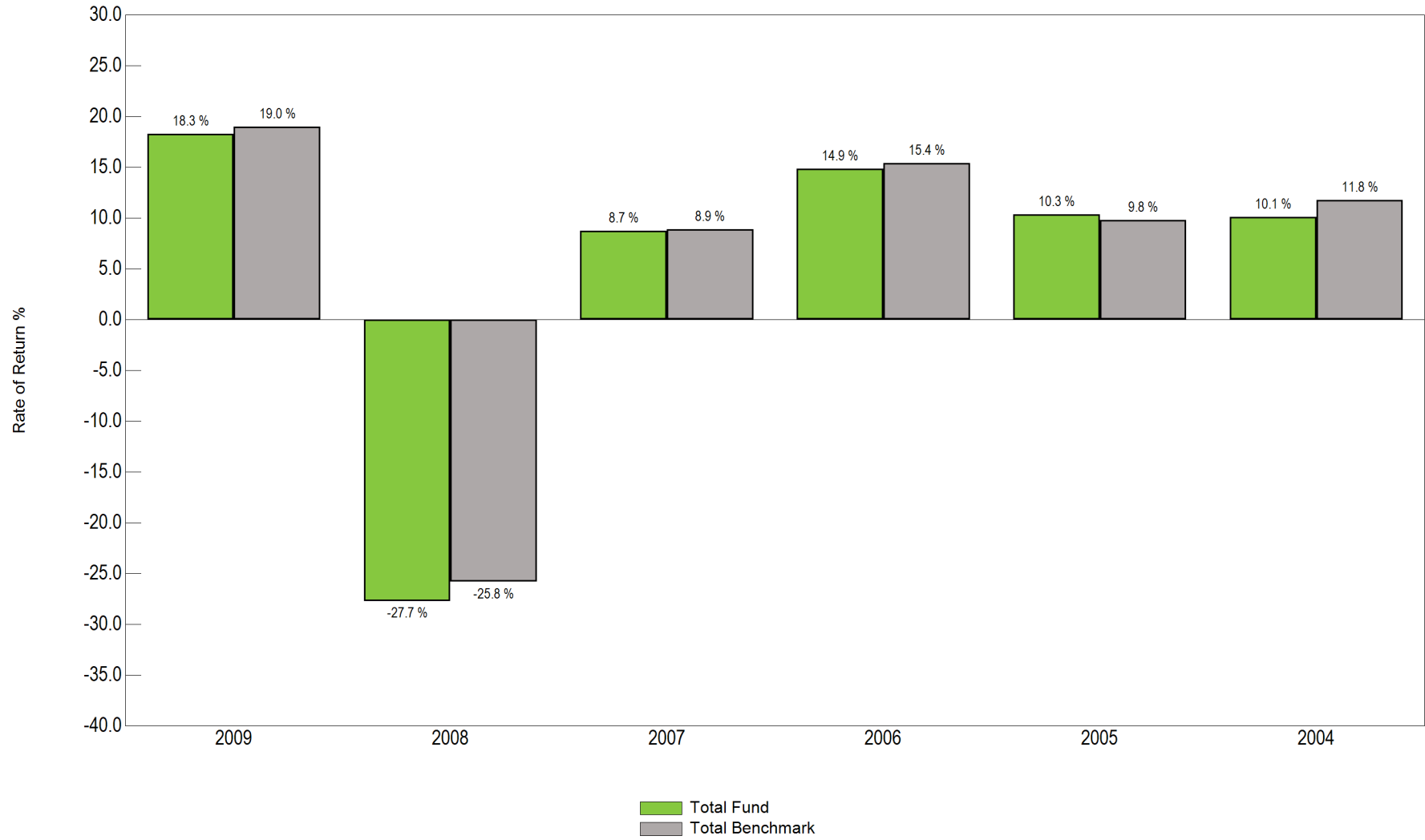
Fund Return vs. Benchmark Portfolio Return



Total Plan- Gross

Performance

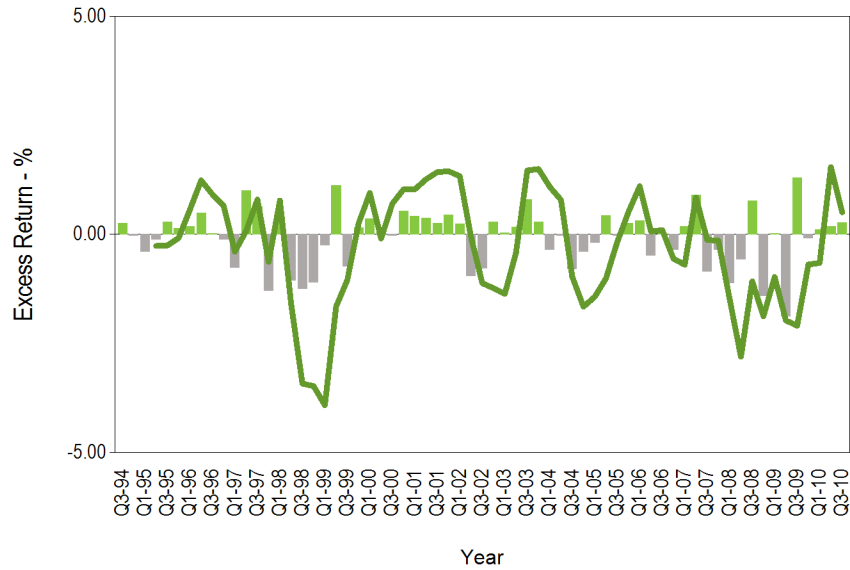
Fund Return vs. Benchmark Portfolio Return



Total Plan

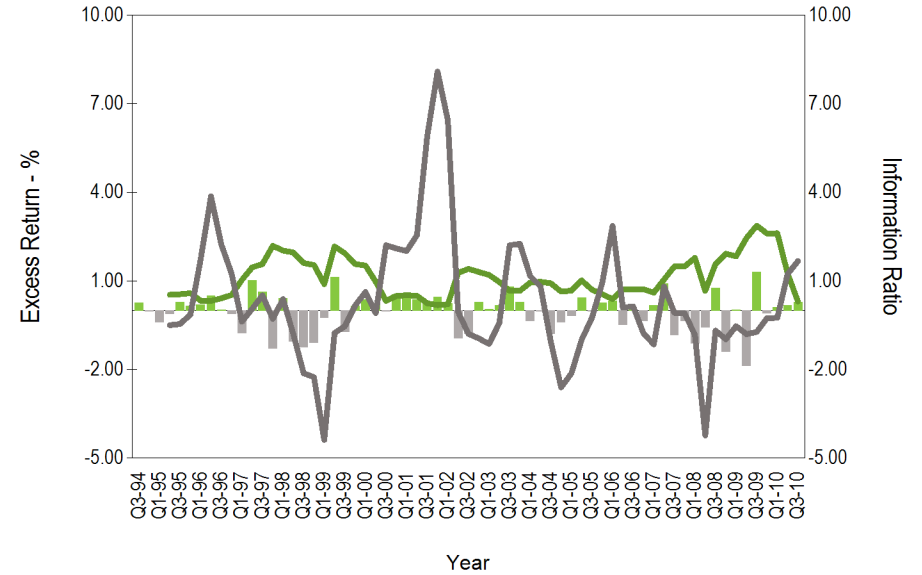
Performance and Risk

Excess Performance
16 Years 3 Months Ending September 30, 2010



- Quarterly Out Performance
- Quarterly Under Performance
- Rolling 1 Year Excess Performance vs. Total Benchmark

Tracking Error and Information Ratio
16 Years 3 Months Ending September 30, 2010

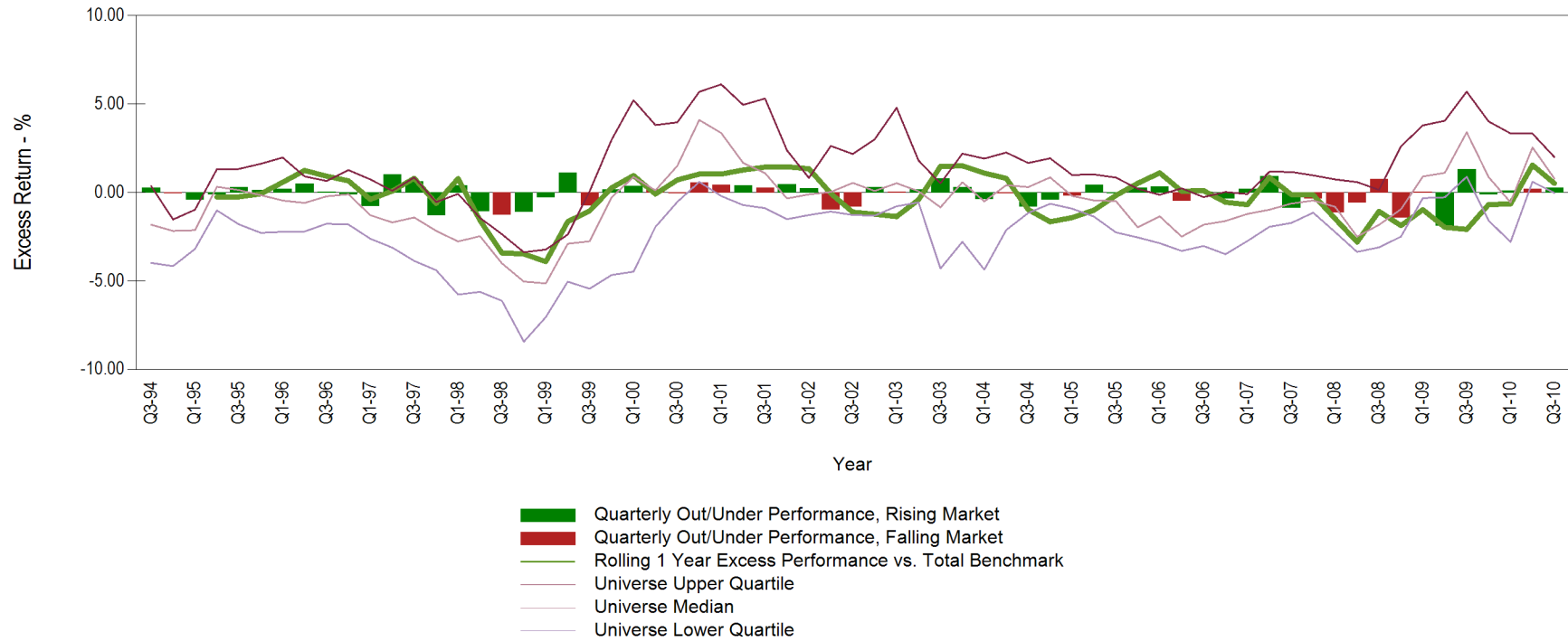


- Quarterly Out Performance
- Quarterly Under Performance
- Rolling 1 Year Tracking Error vs. Total Benchmark
- Rolling 1 Year Information Ratio vs. Total Benchmark

Total Plan

Performance and Risk

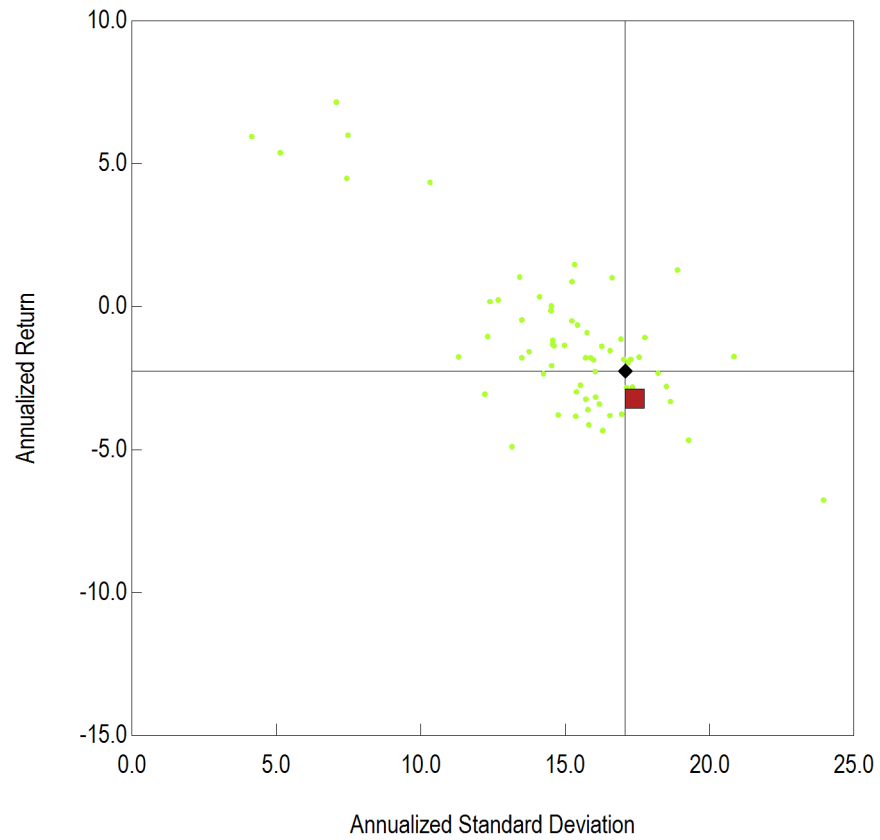
Performance During Rising and Falling Markets
16 Years 3 Months Ending September 30, 2010



Total Plan

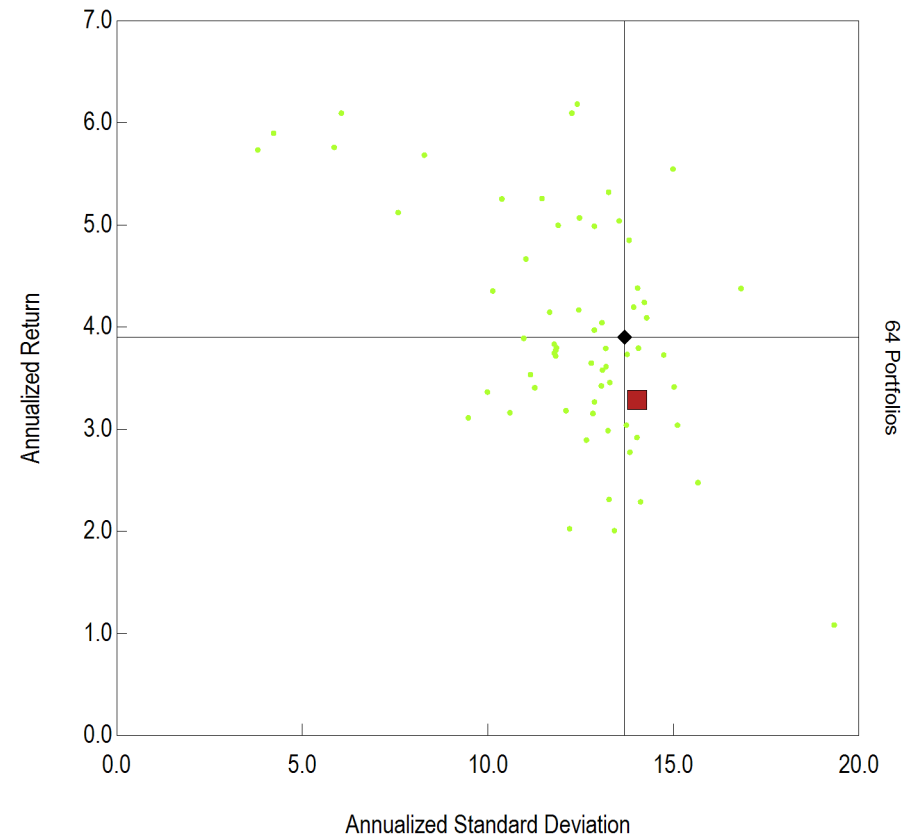
Performance and Risk

Annualized Return vs. Annualized Standard Deviation
3 Years Ending September 30, 2010



- Total Fund
- ◆ Total Benchmark
- Public Funds >\$1B (peer)

Annualized Return vs. Annualized Standard Deviation
5 Years Ending September 30, 2010



- Total Fund
- ◆ Total Benchmark
- Public Funds >\$1B (peer)

Total Plan

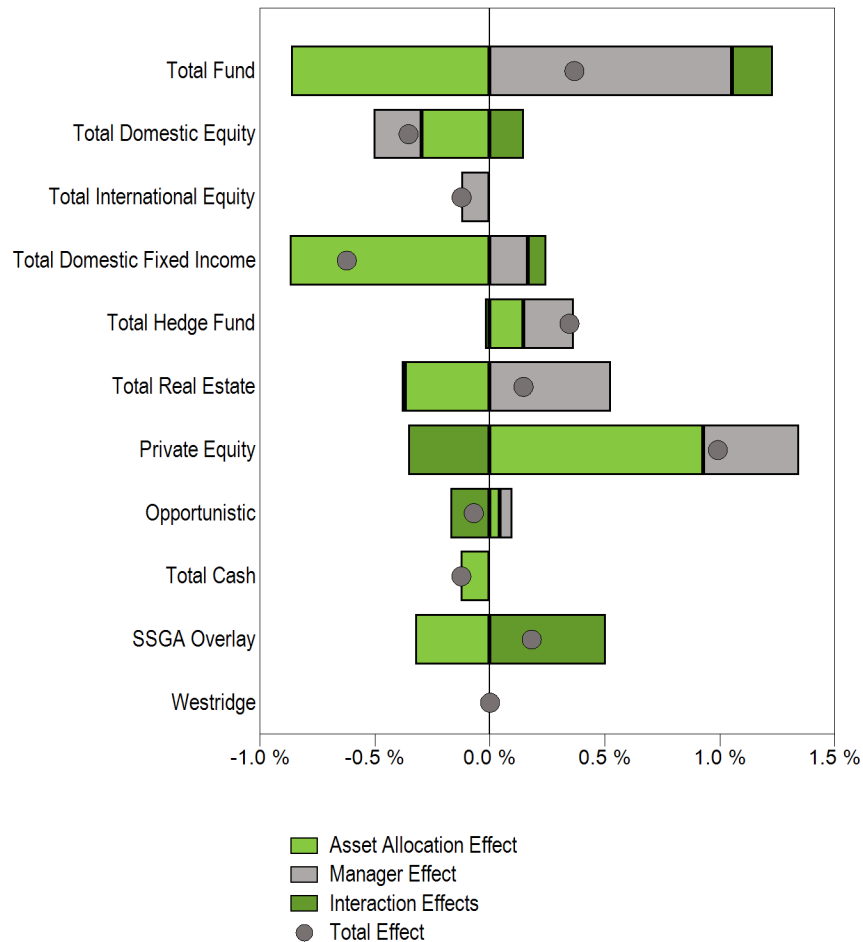
Attribution

Performance Attribution Quarter Ending September 30, 2010

	Quarter	YTD	1 Yr	3 Yrs	2009	2008	2007	2006
Total Fund Return	9.7%	6.9%	10.5%	-3.5%	18.4%	-28.4%	8.7%	14.8%
Policy Benchmark	9.4%	6.2%	9.9%	-2.3%	19.0%	-25.8%	8.9%	15.4%
Excess Return	0.3%	0.7%	0.6%	-1.2%	-0.6%	-2.6%	-0.1%	-0.6%
Selection Effect	1.1%	1.1%	0.1%	-1.7%	-3.5%	-2.2%	0.0%	-0.6%
Asset Allocation Effect	-0.9%	-0.9%	-1.3%	-0.7%	-2.9%	1.0%	0.0%	-0.1%
Interaction Effect	0.2%	0.6%	1.8%	1.2%	6.1%	-1.5%	-0.1%	0.0%
Returns by Asset Class								
Total Fund	9.7%	6.8%	10.4%	-3.2%	18.3%	-27.7%	8.7%	14.9%
Total Domestic Equity	11.3%	5.7%	11.7%	-7.4%	26.9%	-38.7%	4.6%	14.5%
Total Large Cap	11.8%	4.5%	10.6%	-8.1%	27.2%	-39.5%	4.9%	15.2%
Large Cap Core Index	11.4%	4.3%	10.7%	-6.7%	28.5%	-37.5%		
Enhanced Large Cap Core Index	11.5%	5.3%	11.9%		-2.2%			
Equity Active Extension (130/30)	11.0%	1.5%	7.7%		33.5%			
Large Cap Growth	14.6%	5.9%	14.2%	-7.8%	35.4%	-45.4%		
Large Cap Value	11.1%	5.3%	8.7%		31.0%			
Total Small Cap	9.4%	10.3%	15.9%	-5.0%	25.6%	-35.3%	2.4%	10.5%
Small Cap Growth	8.0%	8.9%	14.1%	-7.5%	30.3%	-41.7%		
Small Cap Value	10.5%	11.4%	17.3%		22.2%			
Total International Equity	16.0%	4.4%	8.0%	-6.2%	44.2%	-44.6%	15.9%	28.2%
Total International Equity-Established Markets	15.4%	2.0%	4.0%	-8.8%	34.4%	-43.0%	8.5%	26.9%
Total International Equity-Emerging Markets	17.5%	11.0%	19.6%	1.2%	77.8%	-49.3%	39.4%	37.4%
Total Domestic Fixed Income	3.6%	10.1%	13.0%	9.7%	17.1%	-0.1%	6.4%	5.1%
Total Hedge Fund	4.9%	2.7%	5.5%	-2.6%	12.0%	-21.8%	12.6%	10.3%
Total Real Estate	9.6%	11.5%	8.9%	-8.8%	-19.2%	-15.7%	11.6%	16.5%
Separate Account Portfolios	7.3%	14.3%	8.8%		-28.8%			
Value Added	6.2%	-26.9%	-33.9%	-36.2%	-60.5%	-5.5%		
Limited Partnerships	4.3%	9.0%	2.8%		-33.1%			

Total Plan Attribution

**Attribution Effects Relative to Total Fund Attribution Benchmark
3 Months Ending September 30, 2010**



**Attribution Summary
3 Months Ending September 30, 2010**

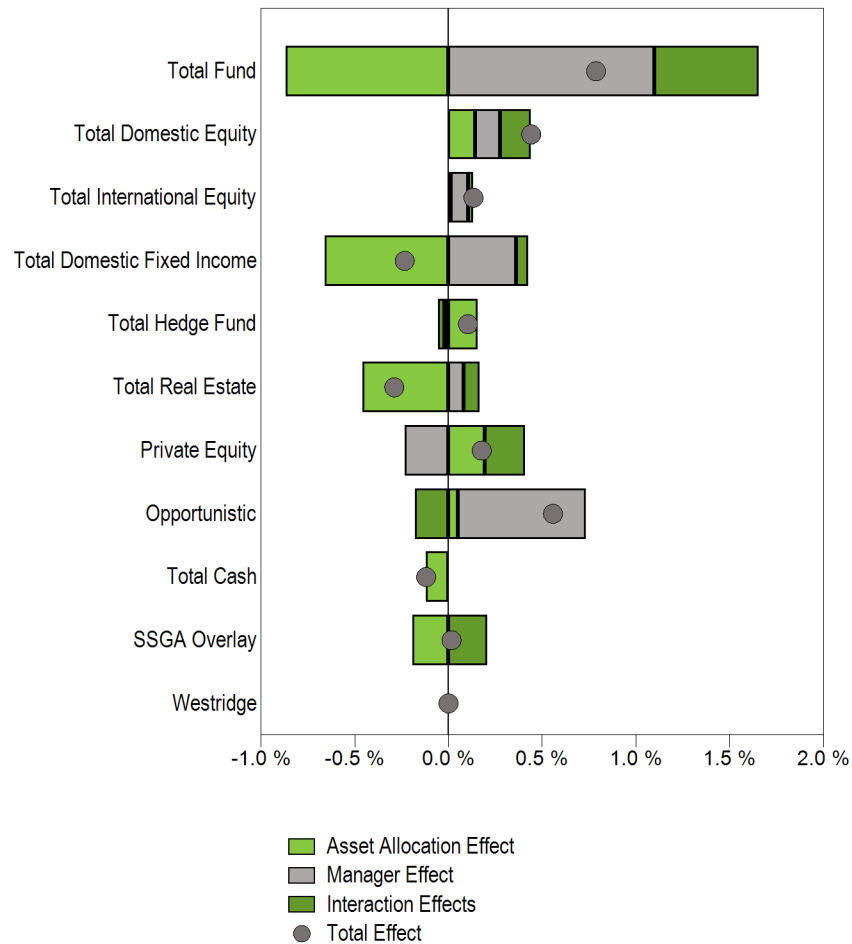
	Actual Return	Target Return	Relative Return	Manager Effect	Asset Allocation Effect	Interaction Effects	Total Effects
Total Domestic Equity	11.3%	11.5%	-0.2%	-0.2%	-0.3%	0.2%	-0.4%
Total International Equity	16.0%	16.6%	-0.6%	-0.1%	0.0%	0.0%	-0.1%
Total Domestic Fixed Income	3.6%	2.5%	1.2%	0.2%	-0.9%	0.1%	-0.6%
Total Hedge Fund	4.9%	1.3%	3.6%	0.2%	0.1%	0.0%	0.3%
Total Real Estate	9.6%	5.7%	3.9%	0.5%	-0.4%	0.0%	0.1%
Private Equity	-3.6%	-11.2%	7.6%	0.4%	0.9%	-0.4%	1.0%
Opportunistic	9.7%	11.6%	-1.9%	0.1%	0.0%	-0.2%	-0.1%
Total Cash	0.1%	0.0%	0.1%	0.0%	-0.1%	0.0%	-0.1%
Total	9.7%	9.4%	0.3%	1.1%	-0.9%	0.2%	0.4%

**Attribution Summary
3 Months Ending September 30, 2010**

	Relative Amount	Manager Effect	Asset Allocation Effect	Interaction Effects	Total Effects
Total Domestic Equity	-\$3,279,904.3	-\$10,791,781.0	-\$15,465,012.7	\$7,815,882.7	-\$18,440,911.0
Total International Equity	-\$6,154,958.9	-\$6,383,047.7	-\$78,951.1	\$10,348.6	-\$6,451,650.2
Total Domestic Fixed Income	\$12,158,804.1	\$8,580,187.3	-\$45,247,754.0	\$4,239,079.4	-\$32,428,487.3
Total Hedge Fund	\$9,774,846.6	\$11,450,826.8	\$7,664,684.1	-\$1,125,143.5	\$17,990,367.3
Total Real Estate	\$25,841,290.2	\$27,446,462.0	-\$19,136,474.1	-\$740,619.8	\$7,569,368.1
Private Equity	\$3,087,123.9	\$21,688,901.9	\$48,375,231.5	-\$18,459,464.0	\$51,604,669.4
Opportunistic	-\$5,158,694.7	\$2,929,895.2	\$2,278,386.7	-\$8,883,728.2	-\$3,675,446.3
Total Cash	\$69,710.4	\$0.0	-\$6,544,371.6	\$44,617.4	-\$6,499,754.2
Total		\$54,921,444.5	-\$45,055,068.8	\$9,237,228.5	\$19,103,604.1

Total Plan Attribution

**Attribution Effects Relative to Total Fund Attribution Benchmark
9 Months Ending September 30, 2010**



**Attribution Summary
9 Months Ending September 30, 2010**

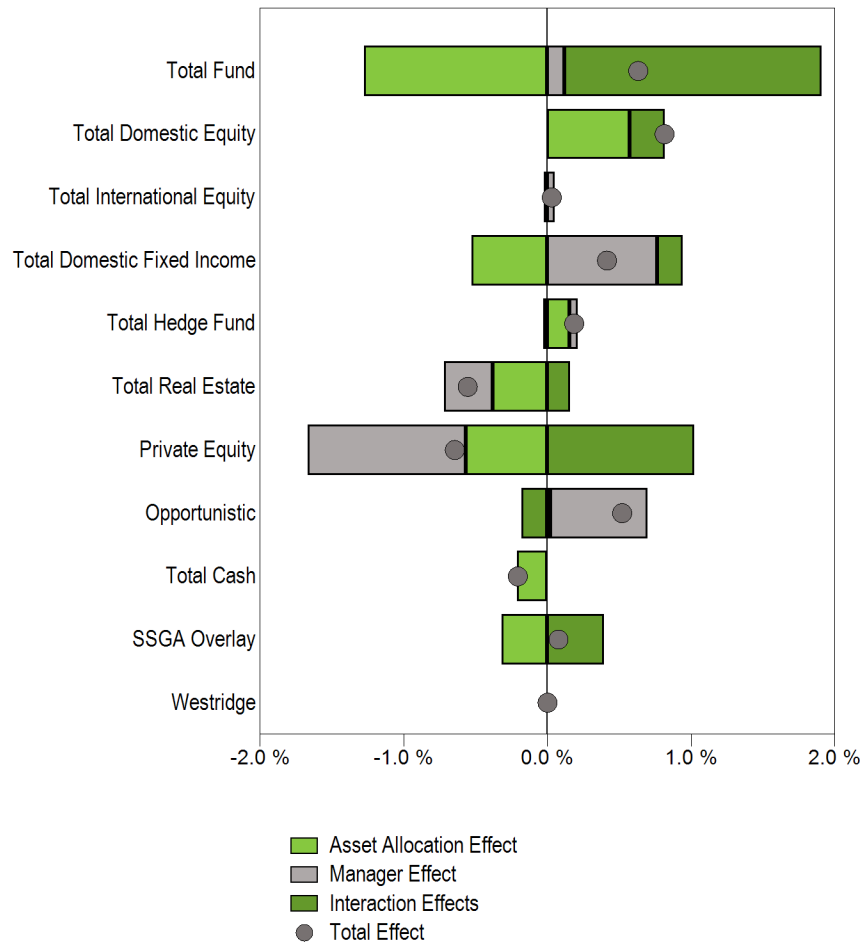
	Actual Return	Target Return	Relative Return	Manager Effect	Asset Allocation Effect	Interaction Effects	Total Effects
Total Domestic Equity	5.7%	4.8%	0.9%	0.1%	0.1%	0.2%	0.4%
Total International Equity	4.4%	3.7%	0.7%	0.1%	0.0%	0.0%	0.1%
Total Domestic Fixed Income	10.1%	7.9%	2.2%	0.4%	-0.7%	0.1%	-0.2%
Total Hedge Fund	2.7%	3.8%	-1.1%	0.0%	0.2%	0.0%	0.1%
Total Real Estate	11.5%	10.6%	1.0%	0.1%	-0.5%	0.1%	-0.3%
Private Equity	-2.9%	0.5%	-3.4%	-0.2%	0.2%	0.2%	0.2%
Opportunistic	12.1%	0.9%	11.2%	0.7%	0.1%	-0.2%	0.6%
Total Cash	0.2%	0.1%	0.1%	0.0%	-0.1%	0.0%	-0.1%
Total	6.9%	6.2%	0.7%	1.1%	-0.9%	0.6%	0.8%

**Attribution Summary
9 Months Ending September 30, 2010**

	Relative Amount	Manager Effect	Asset Allocation Effect	Interaction Effects	Total Effects
Total Domestic Equity	\$14,988,333.4	\$6,876,419.4	\$7,491,861.9	\$8,591,478.1	\$22,959,759.4
Total International Equity	\$7,529,017.2	\$4,796,150.7	\$747,895.4	\$1,371,805.6	\$6,915,851.7
Total Domestic Fixed Income	\$22,245,447.4	\$18,862,596.5	-\$34,322,346.8	\$3,311,854.8	-\$12,147,895.4
Total Hedge Fund	-\$3,024,410.8	-\$1,054,146.6	\$8,177,318.9	-\$1,724,641.1	\$5,398,531.2
Total Real Estate	\$6,212,833.9	\$4,317,929.7	-\$23,812,973.9	\$4,451,484.1	-\$15,043,560.1
Private Equity	-\$1,148,861.0	-\$12,148,756.4	\$10,193,365.7	\$11,181,237.2	\$9,225,846.5
Opportunistic	\$29,026,801.9	\$35,595,569.7	\$2,618,525.1	-\$9,204,214.3	\$29,009,880.5
Total Cash	\$94,151.4	\$0.0	-\$6,268,916.0	\$72,382.4	-\$6,196,533.5
Total		\$57,245,763.0	-\$45,124,338.6	\$28,827,707.8	\$40,949,132.2

Total Plan Attribution

**Attribution Effects Relative to Total Fund Attribution Benchmark
1 Year Ending September 30, 2010**



**Attribution Summary
1 Year Ending September 30, 2010**

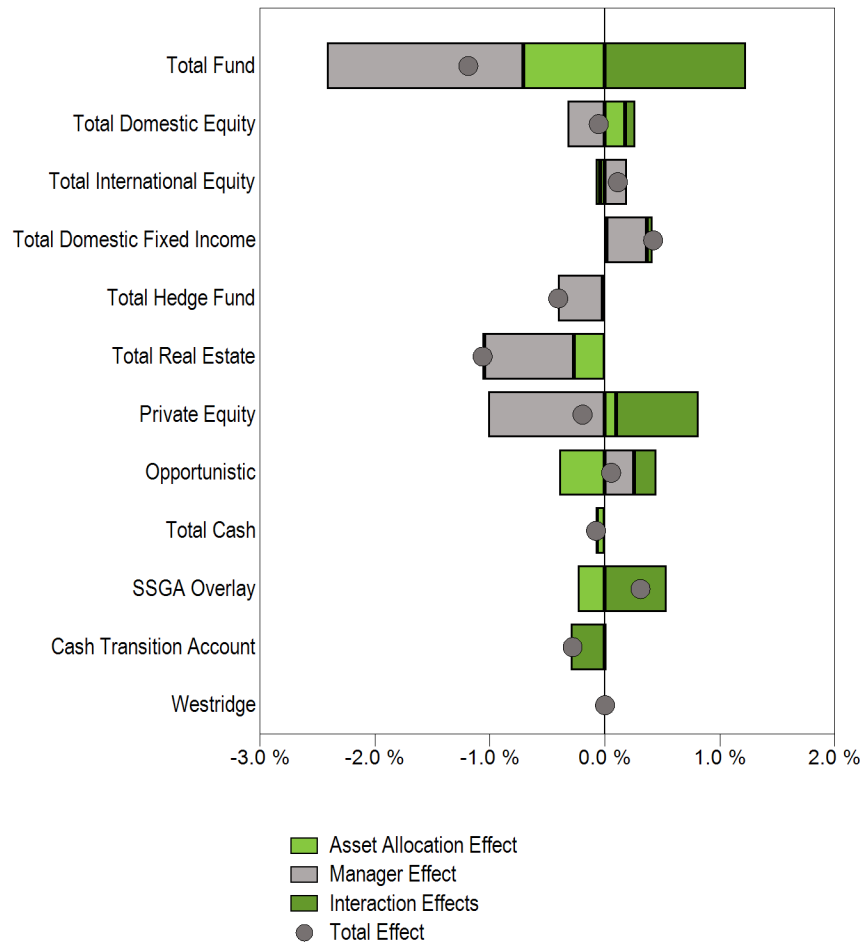
	Actual Return	Target Return	Relative Return	Manager Effect	Asset Allocation Effect	Interaction Effects	Total Effects
Total Domestic Equity	11.7%	11.0%	0.7%	0.0%	0.6%	0.2%	0.8%
Total International Equity	8.0%	7.6%	0.4%	0.1%	0.0%	0.0%	0.0%
Total Domestic Fixed Income	13.0%	8.2%	4.8%	0.8%	-0.5%	0.2%	0.4%
Total Hedge Fund	5.5%	5.1%	0.4%	0.1%	0.2%	0.0%	0.2%
Total Real Estate	8.9%	10.8%	-1.9%	-0.3%	-0.4%	0.2%	-0.6%
Private Equity	-0.5%	16.4%	-16.9%	-1.1%	-0.6%	1.0%	-0.6%
Opportunistic	21.6%	10.0%	11.6%	0.7%	0.0%	-0.2%	0.5%
Total Cash	0.3%	0.1%	0.1%	0.0%	-0.2%	0.0%	-0.2%
Total	10.5%	9.9%	0.6%	0.1%	-1.3%	1.8%	0.6%

**Attribution Summary
1 Year Ending September 30, 2010**

	Relative Amount	Manager Effect	Asset Allocation Effect	Interaction Effects	Total Effects
Total Domestic Equity	\$11,876,311.5	-\$232,870.7	\$29,697,725.4	\$12,638,176.9	\$42,103,031.7
Total International Equity	\$4,344,494.7	\$2,737,867.2	-\$1,192,213.6	-\$7,673.4	\$1,537,980.3
Total Domestic Fixed Income	\$48,922,875.1	\$39,445,968.8	-\$27,242,118.0	\$9,178,608.3	\$21,382,459.1
Total Hedge Fund	\$1,151,663.5	\$3,123,994.2	\$7,951,879.5	-\$1,500,080.3	\$9,575,793.3
Total Real Estate	-\$11,851,385.0	-\$17,272,054.7	-\$19,738,525.4	\$8,306,925.0	-\$28,703,651.1
Private Equity	-\$5,251,904.5	-\$56,857,300.1	-\$29,250,391.1	\$52,757,141.9	-\$33,350,549.3
Opportunistic	\$29,247,576.8	\$35,097,421.4	\$991,090.2	-\$9,268,012.7	\$26,820,498.9
Total Cash	\$128,768.1	\$0.0	-\$10,804,751.5	\$107,776.5	-\$10,696,975.0
Total		\$6,043,026.2	-\$66,002,448.8	\$92,577,400.6	\$32,617,977.9

Total Plan Attribution

**Attribution Effects Relative to Total Fund Attribution Benchmark
3 Years Ending September 30, 2010**



**Attribution Summary
3 Years Ending September 30, 2010**

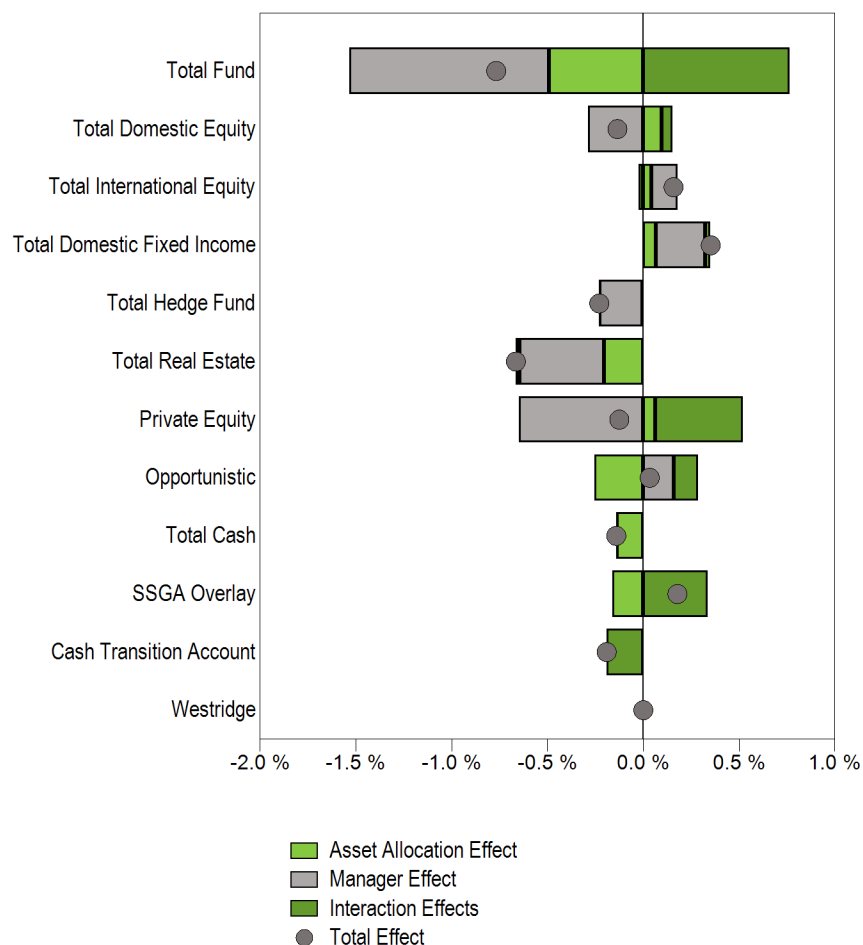
	Actual Return	Target Return	Relative Return	Manager Effect	Asset Allocation Effect	Interaction Effects	Total Effects
Total Domestic Equity	-7.4%	-6.6%	-0.8%	-0.3%	0.2%	0.1%	-0.1%
Total International Equity	-6.2%	-7.3%	1.1%	0.2%	0.0%	0.0%	0.1%
Total Domestic Fixed Income	9.7%	7.4%	2.3%	0.4%	0.0%	0.1%	0.4%
Total Hedge Fund	-2.6%	5.8%	-8.4%	-0.4%	0.0%	0.0%	-0.4%
Total Real Estate	-8.8%	-3.5%	-5.3%	-0.8%	-0.3%	0.0%	-1.1%
Private Equity	--	--	--	-1.0%	0.1%	0.7%	-0.2%
Opportunistic	-2.2%	-6.8%	4.6%	0.3%	-0.4%	0.2%	0.1%
Total Cash	0.6%	1.0%	-0.4%	0.0%	-0.1%	0.0%	-0.1%
Total	-3.5%	-2.3%	-1.2%	-1.7%	-0.7%	1.2%	-1.2%

**Attribution Summary
3 Years Ending September 30, 2010**

	Relative Amount	Manager Effect	Asset Allocation Effect	Interaction Effects	Total Effects
Total Domestic Equity	-\$11,328,336.9	-\$16,753,219.4	\$9,385,567.0	\$4,536,140.9	-\$2,831,511.5
Total International Equity	\$10,248,957.1	\$9,985,175.3	-\$1,969,341.2	-\$2,182,389.1	\$5,833,445.0
Total Domestic Fixed Income	\$30,781,622.0	\$18,318,968.1	\$847,437.5	\$2,647,588.2	\$21,813,993.8
Total Hedge Fund	-\$25,542,786.0	-\$20,349,866.5	-\$862,287.8	-\$23,069.3	-\$21,235,223.6
Total Real Estate	-\$34,305,994.9	-\$40,760,759.3	-\$13,892,232.7	-\$835,119.3	-\$55,488,111.3
Private Equity	-\$12,005,255.4	-\$52,887,453.2	\$5,253,807.8	\$37,453,584.8	-\$10,180,060.6
Opportunistic	\$9,687,550.7	\$13,235,945.5	-\$20,722,382.4	\$10,242,113.1	\$2,755,676.2
Total Cash	-\$611,163.8	\$0.0	-\$3,540,925.3	-\$520,393.8	-\$4,061,319.1
Total		-\$89,211,209.5	-\$36,840,816.3	\$64,055,895.0	-\$61,996,130.7

Total Plan Attribution

**Attribution Effects Relative to Total Fund Attribution Benchmark
5 Years Ending September 30, 2010**



**Attribution Summary
5 Years Ending September 30, 2010**

	Actual Return	Target Return	Relative Return	Manager Effect	Asset Allocation Effect	Interaction Effects	Total Effects
Total Domestic Equity	0.1%	0.9%	-0.7%	-0.3%	0.1%	0.1%	-0.1%
Total International Equity	5.6%	4.8%	0.8%	0.1%	0.0%	0.0%	0.2%
Total Domestic Fixed Income	7.7%	6.2%	1.5%	0.3%	0.1%	0.0%	0.4%
Total Hedge Fund	2.6%	7.4%	-4.7%	-0.2%	0.0%	0.0%	-0.2%
Total Real Estate	1.1%	4.2%	-3.1%	-0.4%	-0.2%	0.0%	-0.7%
Private Equity	--	--	--	-0.6%	0.1%	0.5%	-0.1%
Opportunistic	--	--	--	0.2%	-0.3%	0.1%	0.0%
Total Cash	2.4%	2.5%	-0.1%	0.0%	-0.1%	0.0%	-0.1%
Total	3.1%	3.9%	-0.8%	-1.0%	-0.5%	0.8%	-0.8%

**Attribution Summary
5 Years Ending September 30, 2010**

	Relative Amount	Manager Effect	Asset Allocation Effect	Interaction Effects	Total Effects
Total Domestic Equity	-\$11,219,580.5	-\$15,266,658.9	\$5,069,923.1	\$3,030,782.1	-\$7,165,953.7
Total International Equity	\$9,639,555.1	\$7,293,052.7	\$2,289,375.6	-\$1,225,817.2	\$8,356,611.1
Total Domestic Fixed Income	\$19,197,493.1	\$13,511,844.5	\$3,598,693.9	\$1,544,411.4	\$18,654,949.8
Total Hedge Fund	-\$13,522,007.1	-\$11,763,992.6	-\$251,630.0	-\$180,811.4	-\$12,196,434.0
Total Real Estate	-\$20,574,602.5	-\$23,282,643.4	-\$10,867,738.3	-\$1,104,480.3	-\$35,254,862.0
Private Equity	-\$5,921,064.3	-\$34,288,405.3	\$3,367,735.6	\$24,274,852.9	-\$6,645,816.8
Opportunistic	\$4,777,958.4	\$8,537,097.9	-\$13,417,840.4	\$6,632,507.6	\$1,751,765.0
Total Cash	-\$115,459.6	\$0.0	-\$7,280,954.4	-\$209,118.3	-\$7,490,072.7
Total		-\$55,259,705.1	-\$26,004,171.3	\$40,549,210.7	-\$40,714,665.7