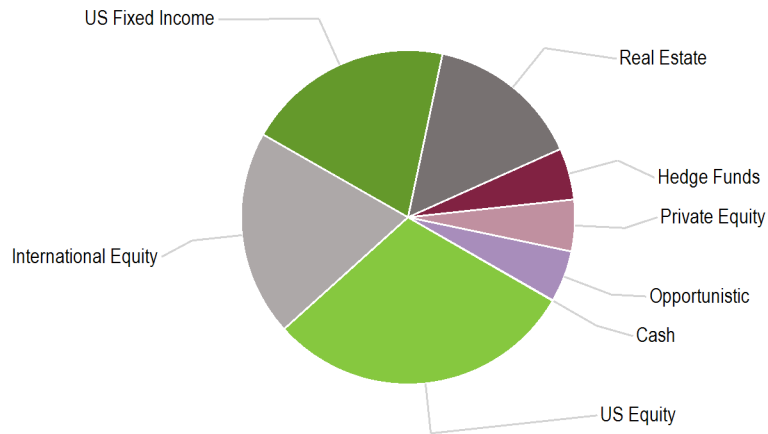


Total Plan

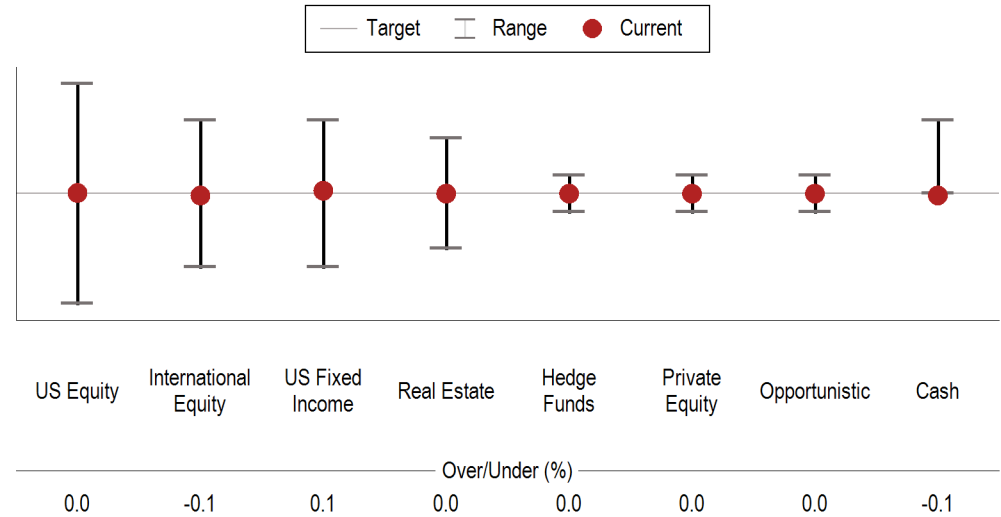
Total Plan with Overlay

Asset Allocation vs. Target

Current Allocation
as of December 31, 2010



Actual vs. Target
as of December 31, 2010

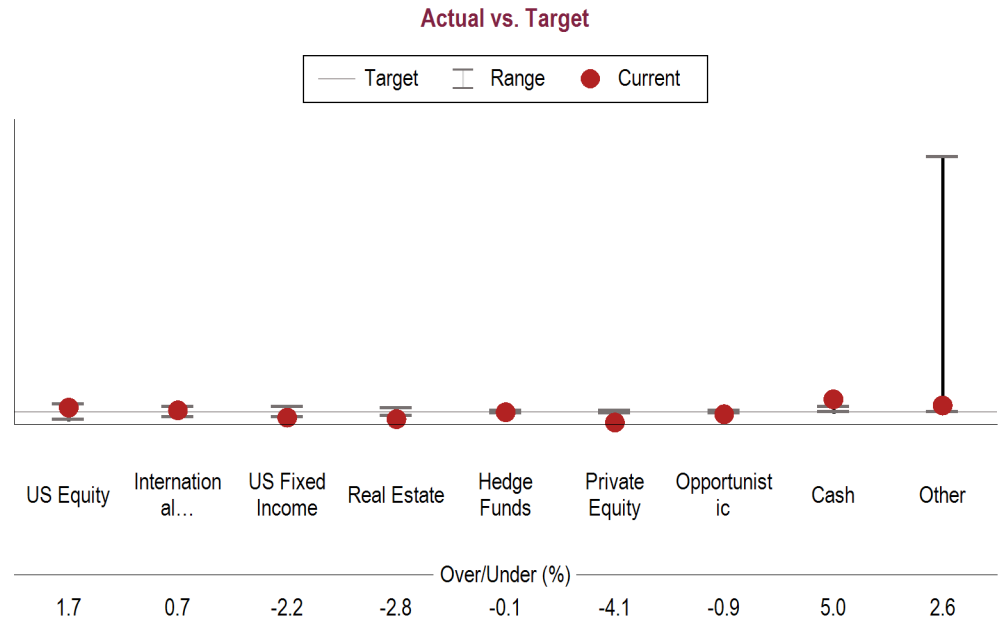
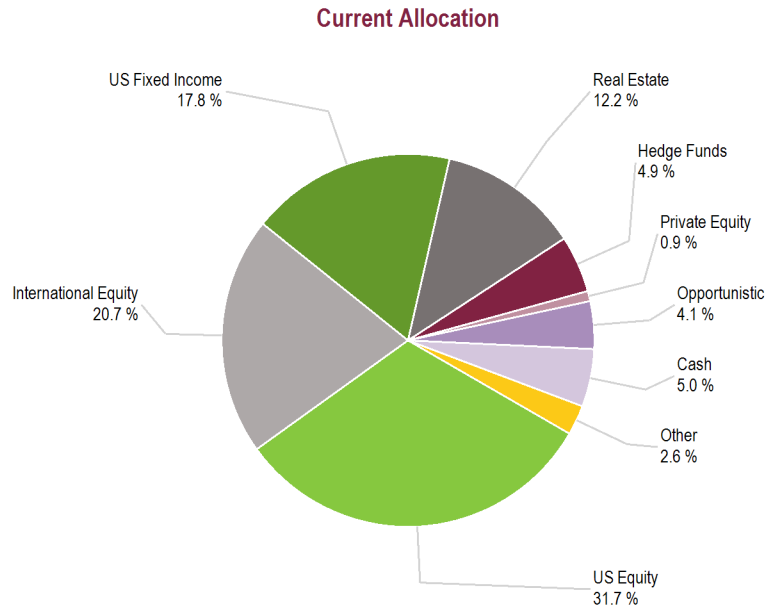


Allocation vs. Targets and Policy
as of December 31, 2010

	Current Balance	Current Allocation	Target Allocation	Difference	Target Ranges	Within IPS Range?
US Equity	\$1,776,450,157	30.0%	30.0%	\$1,183,511	27.0% - 33.0%	Yes
International Equity	\$1,180,552,320	20.0%	20.0%	-\$2,958,778	18.0% - 22.0%	Yes
US Fixed Income	\$1,188,245,142	20.1%	20.0%	\$4,734,044	18.0% - 22.0%	Yes
Real Estate	\$887,633,323	15.0%	15.0%	\$0	13.5% - 16.5%	Yes
Hedge Funds	\$295,877,774	5.0%	5.0%	\$0	4.5% - 5.5%	Yes
Private Equity	\$295,877,774	5.0%	5.0%	\$0	4.5% - 5.5%	Yes
Opportunistic	\$295,877,774	5.0%	5.0%	\$0	4.5% - 5.5%	Yes
Cash	-\$2,958,778	-0.1%	0.0%	-\$2,958,778	0.0% - 2.0%	No
Total	\$5,917,555,488	100.0%	100.0%			

Total Plan excluding Overlay effects

Asset Allocation vs. Target



Allocation vs. Targets and Policy As of December 31, 2010

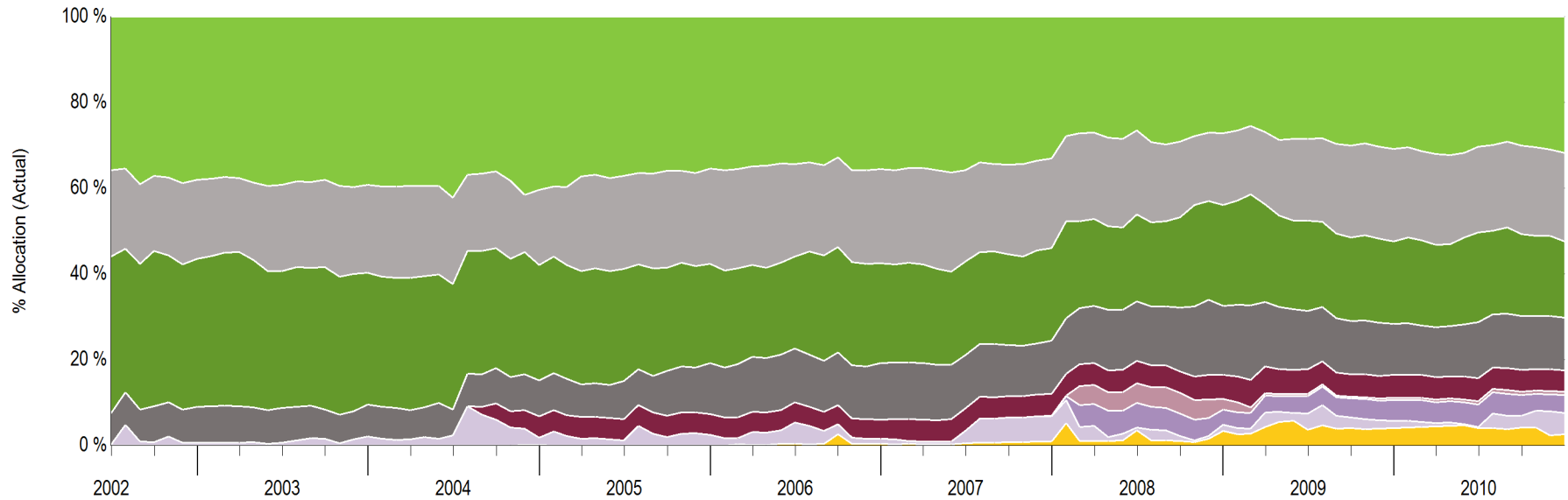
	Current Balance	Current Allocation	Target Allocation	Difference	Target Ranges	Within IPS Range?
US Equity	\$1,878,629,051	31.7%	30.0%	\$103,362,404	27.0% - 33.0%	Yes
International Equity	\$1,223,806,889	20.7%	20.0%	\$40,295,792	18.0% - 22.0%	Yes
US Fixed Income	\$1,054,628,722	17.8%	20.0%	-\$128,882,376	18.0% - 22.0%	No
Real Estate	\$722,997,727	12.2%	15.0%	-\$164,635,596	13.5% - 16.5%	No
Hedge Funds	\$291,927,103	4.9%	5.0%	-\$3,950,671	4.5% - 5.5%	Yes
Private Equity	\$52,214,925	0.9%	5.0%	-\$243,662,849	4.5% - 5.5%	No
Opportunistic	\$244,551,878	4.1%	5.0%	-\$51,325,897	4.5% - 5.5%	No
Cash	\$295,872,466	5.0%	0.0%	\$295,872,466	0.0% - 2.0%	No
Other *	\$152,926,727	2.6%	--	\$152,926,727	--	No
Total	\$5,917,555,488	100.0%	100.0%			

*Other includes SSgA Overlay and Westridge Capital Management

Total Plan

Asset Allocation

Asset Allocation History
8 Years 6 Months Ending December 31, 2010



37.1	38.1	37.7	39.2	38.0	39.2	39.4	42.2	36.0	40.4	37.3	37.2	35.9	35.4	34.9	34.3	32.9	35.5	35.3	35.9	34.5	33.1	27.0	26.5	29.2	27.2	27.0	28.5	30.1	30.9	32.0	30.4	30.1	31.7
17.6	18.4	17.2	20.1	20.4	20.6	21.5	20.1	18.0	17.5	22.1	21.6	22.7	22.3	23.0	21.6	20.9	22.0	22.5	21.2	20.9	20.9	20.2	19.7	17.7	16.8	16.8	19.1	21.4	21.5	21.2	20.0	20.5	20.7
36.2	34.5	35.9	31.9	33.3	30.6	30.8	29.4	28.0	26.9	26.4	26.2	24.1	23.1	21.4	21.5	24.5	23.3	23.0	21.8	21.1	21.7	20.3	20.2	21.1	23.5	22.7	21.1	19.5	19.3	19.2	20.9	19.1	17.8
8.3	8.4	8.6	8.1	6.8	7.5	6.9	6.0	8.1	8.5	7.6	8.8	10.5	11.9	12.9	12.6	12.4	13.1	13.2	12.5	12.0	12.4	13.3	13.8	14.9	16.1	15.1	13.5	12.4	11.9	11.7	13.0	12.6	12.2
--	--	--	--	--	--	--	3.8	4.9	5.0	5.0	5.0	4.9	4.8	4.7	4.7	4.4	4.4	5.1	5.2	4.9	5.1	5.1	5.3	5.0	5.6	6.2	5.8	5.3	5.3	5.2	5.4	5.0	4.9
--	--	--	--	--	--	--	--	--	--	--	--	--	--	--	--	--	--	--	--	--	0.1	4.5	4.5	4.8	2.5	0.5	0.5	0.4	0.5	0.6	0.8	0.8	0.9
--	--	--	--	--	--	--	--	--	--	--	--	--	--	--	--	--	--	--	--	--	0.0	5.1	5.8	5.2	3.5	3.9	4.0	4.4	4.8	4.9	5.2	4.9	4.1
0.9	0.7	0.7	0.7	1.5	2.1	1.4	2.4	6.1	1.8	1.6	1.1	2.0	2.4	2.9	5.0	2.3	1.2	0.6	2.9	5.8	5.8	3.5	0.6	1.2	1.4	3.4	3.9	2.6	1.7	0.8	0.3	2.8	5.0
--	--	--	--	--	--	--	--	--	0.1	0.0	0.0	0.0	0.0	0.2	0.3	2.7	0.4	0.3	0.5	0.7	0.9	1.1	3.6	1.0	3.4	4.4	3.6	4.1	4.1	4.4	4.0	4.1	2.6

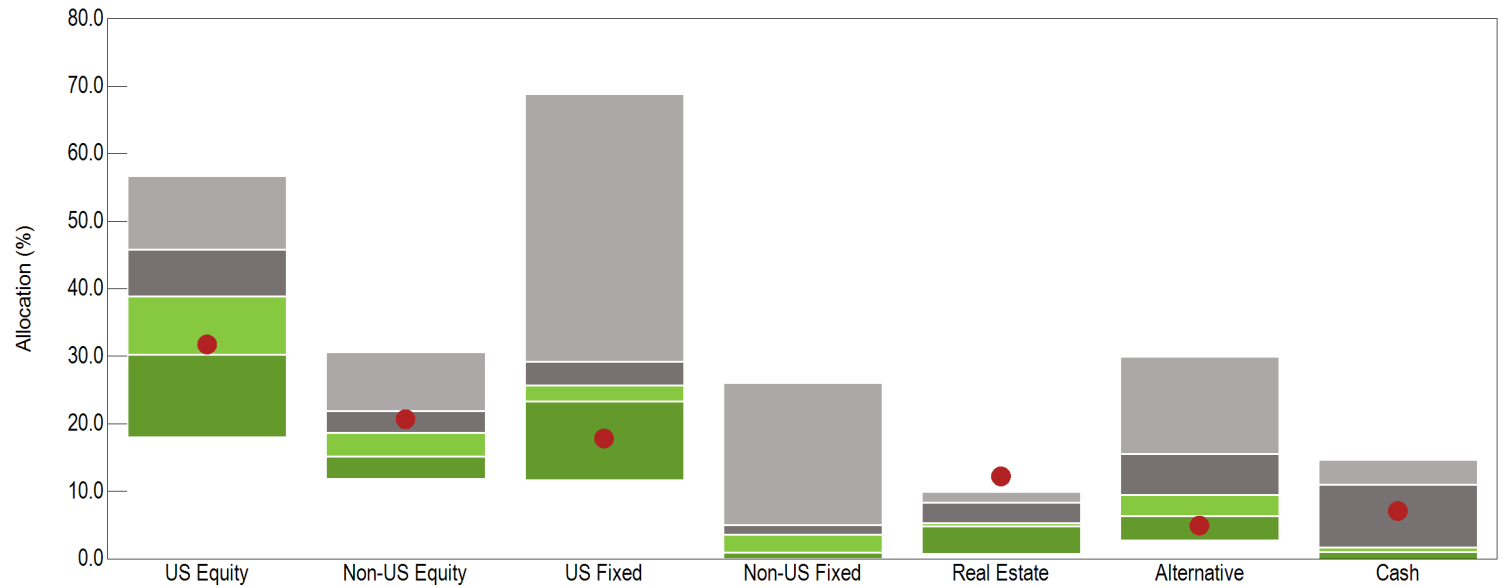
■ US Equity
 ■ US Fixed Income
 ■ Hedge Funds
 ■ Opportunistic
 ■ Cash
 ■ Other *
■ International Equity
 ■ Real Estate
 ■ Private Equity

*Other includes SSgA Overlay and Westridge Capital Management

Total Plan

Asset Allocation

Total Plan Allocation vs. Public Funds >\$1B
Ending December 31, 2010



Allocation (Rank)

5th Percentile	56.7	30.6	68.8	26.0	9.9	30.0	14.6
25th Percentile	45.8	22.0	29.3	5.0	8.4	15.6	11.1
Median	38.9	18.8	25.8	3.7	5.4	9.5	1.7
75th Percentile	30.3	15.2	23.4	1.0	4.9	6.4	1.1
95th Percentile	18.1	11.9	11.8	0.1	0.8	2.8	0.0
# of Portfolios	48	39	49	22	14	22	23
● Total Fund	31.7 (67)	20.7 (32)	17.8 (88)	-- (--)	12.2 (1)	4.9 (91)	7.1 (34)

Total Plan

Manager Allocation

Asset Allocation by Asset Class, Manager, and Target Policy

	Total Market Value	% of Portfolio	US Equity	International Equity	US Fixed Income	Real Estate	Hedge Funds	Private Equity	Opportunistic	Cash	Other *
Total Domestic Equity											
Total Large Cap											
Large Cap Core Index											
AllianceBernstein L.P. Passive	\$664,369,085	11.2%	\$664,369,085								
Enhanced Large Cap Core Index											
BlackRock Financial Mgmt	\$91,535,122	1.5%	\$91,535,122								
Equity Active Extension (130/30)											
JPMorgan Asset Management	\$66,542,502	1.1%	\$66,542,502								
UBS Global Asset Management	\$61,242,275	1.0%	\$61,242,275								
BlackRock	\$60,094,061	1.0%	\$60,094,061								
Large Cap Growth											
Wells Capital Management	\$122,949,086	2.1%	\$122,949,086								
Intech	\$131,095,678	2.2%	\$131,095,678								
Large Cap Value											
LSV Asset Management Large Cap Value	\$125,677,691	2.1%	\$125,677,691								
Pzena Investment Management	\$136,525,074	2.3%	\$136,525,074								
Total Small Cap											
Small Cap Growth											
M.A. Weatherbie	\$100,824,364	1.7%	\$100,824,364								
Turner Investment Parters, Inc.	\$107,044,020	1.8%	\$107,044,020								
Small Cap Value											
Dalton Greiner Hartman Maher	\$103,197,220	1.7%	\$103,197,220								
Wedge Capital Management	\$57,828,082	1.0%	\$57,828,082								
Thompson, Siegel & Walmsley	\$49,704,790	0.8%	\$49,704,790								
Total International Equity											
Bank of Ireland	\$1,820	0.0%		\$1,820							
Total International Equity-Established Markets											
INVESCO	\$281,664,731	4.8%		\$281,664,731							
Capital Guardian Trust Company International Equity	\$238,651,238	4.0%		\$238,651,238							
LSV Asset Management International Equity	\$213,586,569	3.6%		\$213,586,569							
MSCI ex-US Small Cap Transition Account**	\$51,732	0.0%		\$51,732							
William Blair	\$80,348,326	1.4%		\$80,348,326							
Mondrian Investment Partners	\$63,085,893	1.1%		\$63,085,893							

*Other includes SSgA Overlay and Westridge Capital Management

**This portfolio holds remaining assets from Axa Rosenberg when it transitioned to Mondrian Investment Partners. These assets were originated from corporate actions on a few legacy positions

Total Plan

Manager Allocation

	Total Market Value	% of Portfolio	US Equity	International Equity	US Fixed Income	Real Estate	Hedge Funds	Private Equity	Opportunistic	Cash	Other *
Total International Equity-Emerging Markets											
Capital Guardian Trust Company Emerging Markets Growth	\$346,416,579	5.9%		\$346,416,579							
Total Domestic Fixed Income											
Neuberger Investment Management	\$343,952,723	5.8%			\$343,952,723						
Metropolitan West Asset Mgmt	\$361,773,901	6.1%			\$361,773,901						
Bradford & Marzec, Inc	\$348,902,098	5.9%			\$348,902,098						
Total Hedge Fund											
Blackstone Alternative Asset	\$146,018,383	2.5%					\$146,018,383				
Grosvenor Capital Mgmt.	\$145,908,720	2.5%					\$145,908,720				
Total Real Estate											
Separate Account Portfolios											
BlackRock Realty Unleveraged											
BlackRock Realty Leveraged	\$170,428,635	2.9%				\$170,428,635					
BlackRock Realty Portfolio II Unleveraged											
BlackRock Realty Portfolio II Leveraged	\$74,740,281	1.3%				\$74,740,281					
Cornerstone Real Est Adv Unleveraged											
Cornerstone Real Est Adv Leveraged	\$131,534,147	2.2%				\$131,534,147					
Value Added											
UBS Realty Inv LLC Value Added	\$16,825,368	0.3%				\$16,825,368					
AEW Cap Mgmt Value Added	\$5,848,455	0.1%				\$5,848,455					
Hines Value Added	\$4,260,756	0.1%				\$4,260,756					
Limited Partnerships											
BlackRock Realty Granite Property Fund	\$39,714,719	0.7%				\$39,714,719					
Cornerstone Real Est Adv Patriot Fund	\$61,090,250	1.0%				\$61,090,250					
Heitman Advisory JMB V	\$8,096	0.0%				\$8,096					
REITS											
Principal Global Investors	\$52,992,586	0.9%				\$52,992,586					
Urdang Investment Mgmt. Inc.	\$57,809,778	1.0%				\$57,809,778					
CB Richard Ellis Global	\$107,744,656	1.8%				\$107,744,656					
Private Equity											
HarbourVest	\$26,255,691	0.4%						\$26,255,691			
Goldman Sachs & Company	\$18,606,489	0.3%						\$18,606,489			
Abbott Capital Management	\$6,354,007	0.1%						\$6,354,007			
Harbourvest International Private Equity	\$998,739	0.0%						\$998,739			
Opportunistic											
PIMCO Advisors Inst Services Distressed Mortgage Fund	\$44,917,332	0.8%							\$44,917,332		
State Street Global Advisors Real Asset Strategy	\$33,474,826	0.6%							\$33,474,826		

*Other includes SSgA Overlay and Westridge Capital Management

Total Plan

Manager Allocation

	Total Market Value	% of Portfolio	US Equity	International Equity	US Fixed Income	Real Estate	Hedge Funds	Private Equity	Opportunistic	Cash	Other *
Stone Tower Capital	\$35,969,725	0.6%							\$35,969,725		
PIMCO TALF Investment and Recovery	\$1,972,447	0.0%							\$1,972,447		
METWEST Enhanced TALF	\$15,043,447	0.3%							\$15,043,447		
Commodities											
Neuberger Investment Management	\$44,754,730	0.8%							\$44,754,730		
Blackstone Alternatives Asset	\$68,419,371	1.2%							\$68,419,371		
Total Cash											
Cash	\$295,872,466	5.0%								\$295,872,466	
SSGA Overlay	\$122,640,632	2.1%									\$122,640,632
Westridge	\$30,286,095	0.5%									\$30,286,095
Total	\$5,917,555,488	100.0%	\$1,878,629,051	\$1,223,806,889	\$1,054,628,722	\$722,997,727	\$291,927,103	\$52,214,925	\$244,551,878	\$295,872,466	\$152,926,727
Difference from Target (%)			1.7%	0.7%	-2.2%	-2.8%	-0.1%	-4.1%	-0.9%	5.0%	2.6%
Difference from Target (\$)			\$103,362,404	\$40,295,792	-\$128,882,376	-\$164,635,596	-\$3,950,671	-\$243,662,849	-\$51,325,897	\$295,872,466	\$152,926,727

*Other includes SSGA Overlay and Westridge Capital Management

Total Plan - Gross

Performance Summary

Total Plan Performance

Name	Current Market Value	Current Allocation	Ending December 31, 2010										Inception	
			3 Mo	Rank	Fiscal YTD	Rank	1 Yr	Rank	3 Yrs	Rank	5 Yrs	Rank	Return	Since
Total Fund with SSGA Overlay *	\$5,917,555,488	100.0%	5.9%	45	15.4%	48	12.7%	61	1.3%	27	--	--	4.5%	Feb-06
<i>Total Benchmark</i>			6.8%	24	16.8%	24	13.5%	50	0.1%	58	4.7%	39	4.2%	Feb-06
<i>Public Funds >\$1B Median</i>			5.8%		15.3%		13.4%		0.4%		4.5%		--	Feb-06
Total Fund excluding Overlay effects **			5.9%	45	16.1%	32	13.1%	55	-1.1%	84	3.9%	78	8.5%	Jun-86
<i>Total Benchmark</i>			6.8%	24	16.8%	24	13.5%	50	0.1%	58	4.7%	39	8.8%	Jun-86
<i>Public Funds >\$1B Median</i>			5.8%		15.3%		13.4%		0.4%		4.5%		8.5%	Jun-86
Total Domestic Equity	\$1,878,629,051	31.7%	11.9%	45	24.6%	69	18.3%	48	-2.7%	79	2.0%	83	9.4%	Jun-86
<i>Russell 3000</i>			11.6%	57	24.5%	72	16.9%	74	-2.0%	66	2.7%	63	9.2%	Jun-86
<i>Public Funds >\$1B - US Eq Median</i>			11.7%		25.0%		18.0%		-1.6%		3.1%		--	Jun-86
Total Large Cap	\$1,460,030,574	24.7%	11.0%		24.2%		16.0%		-3.7%		1.5%		2.5%	Mar-98
<i>Russell 1000</i>			11.2%		24.0%		16.1%		-2.4%		2.6%		3.2%	Mar-98
Large Cap Core Index	\$664,369,085	11.2%	11.1%		23.7%		15.9%		--		--		6.6%	Sep-08
<i>Russell 1000</i>			11.2%		24.0%		16.1%		-2.4%		2.6%		6.6%	Sep-08
AllianceBernstein L.P. Passive	\$664,369,085	11.2%	11.1%		23.7%		15.9%		-2.4%		2.6%		9.2%	Mar-89
<i>Russell 1000</i>			11.2%		24.0%		16.1%		-2.4%		2.6%		9.4%	Mar-89
Enhanced Large Cap Core Index ***	\$91,535,122	1.5%	11.1%		23.9%		17.0%		--		--		-5.0%	Oct-08
<i>Russell 1000</i>			11.2%		24.0%		16.1%		-2.4%		2.6%		6.6%	Oct-08

* Weighted average performance calculated using month-end adjusted asset class weights as provided by State Street. Starting 3Q2010, note that historical performance has been restated using index returns to compute the portfolio's performance. Prior to the third quarter of 2010, total plan composite returns were used.

** Calculated using underlying data (market values, transactions, cash flows). Includes assets in the Overlay account but does not take into account the Overlay's effect on asset allocation

*** Composite performance includes Westridge through June 30, 2009

Total Plan - Gross

Performance Summary

Name	Current Market Value	Current Allocation	Ending December 31, 2010								Inception			
			3 Mo	Rank	Fiscal YTD	Rank	1 Yr	Rank	3 Yrs	Rank	5 Yrs	Rank	Return	Since
BlackRock Financial Mgmt <i>Russell 1000</i>	\$91,535,122	1.5%	11.1%		23.9%		17.0%		--		--		3.0%	Jul-08
			11.2%		24.0%		16.1%		-2.4%		2.6%		2.4%	Jul-08
Equity Active Extension (130/30) <i>Russell 1000</i>	\$187,878,838	3.2%	11.6%		23.8%		13.2%		--		--		6.9%	Oct-08
			11.2%		24.0%		16.1%		-2.4%		2.6%		6.6%	Oct-08
JPMorgan Asset Management <i>S&P 500 Index (Total Return)</i> <i>Russell 1000</i>	\$66,542,502	1.1%	12.0%		24.0%		15.5%		--		--		7.2%	Jul-08
			10.8%		23.3%		15.1%		-2.9%		2.3%		2.0%	Jul-08
			11.2%		24.0%		16.1%		-2.4%		2.6%		2.4%	Jul-08
UBS Global Asset Management <i>Russell 1000</i>	\$61,242,275	1.0%	10.5%		22.8%		9.4%		--		--		1.2%	Jul-08
			11.2%		24.0%		16.1%		-2.4%		2.6%		2.4%	Jul-08
BlackRock <i>S&P 500 Index (Total Return)</i>	\$60,094,061	1.0%	12.1%		24.7%		14.9%		--		--		0.1%	Jul-08
			10.8%		23.3%		15.1%		-2.9%		2.3%		2.0%	Jul-08
Large Cap Growth <i>Russell 1000 Growth</i>	\$254,044,764	4.3%	12.3%		28.6%		19.0%		--		--		8.4%	Oct-08
			11.8%		26.4%		16.7%		-0.5%		3.8%		9.9%	Oct-08
Wells Capital Management <i>Russell 1000 Growth</i>	\$122,949,086	2.1%	12.2%		31.5%		18.1%		--		--		-2.9%	Apr-08
			11.8%		26.4%		16.7%		-0.5%		3.8%		1.6%	Apr-08
Intech <i>Russell 1000 Growth</i>	\$131,095,678	2.2%	12.4%		26.1%		19.8%		-2.4%		--		1.6%	Oct-06
			11.8%		26.4%		16.7%		-0.5%		3.8%		2.9%	Oct-06

Total Plan - Gross

Performance Summary

Name	Current Market Value	Current Allocation	Ending December 31, 2010								Inception			
			3 Mo	Rank	Fiscal YTD	Rank	1 Yr	Rank	3 Yrs	Rank	5 Yrs	Rank	Return	Since
Large Cap Value	\$262,202,765	4.4%	9.3%		21.4%		15.2%		--		--		6.1%	Oct-08
<i>Russell 1000 Value</i>			10.5%		21.7%		15.5%		-4.4%		1.3%		3.3%	Oct-08
LSV Asset Management Large Cap Value	\$125,677,691	2.1%	8.7%		20.7%		14.1%		-5.7%		1.2%		4.6%	Oct-04
<i>Russell 1000 Value</i>			10.5%		21.7%		15.5%		-4.4%		1.3%		3.5%	Oct-04
Pzena Investment Management	\$136,525,074	2.3%	9.9%		22.1%		16.2%		-4.1%		-1.7%		2.0%	Oct-04
<i>Russell 1000 Value</i>			10.5%		21.7%		15.5%		-4.4%		1.3%		3.5%	Oct-04
Total Small Cap	\$418,598,476	7.1%	15.2%		26.0%		27.0%		1.1%		3.2%		12.2%	Dec-90
<i>Russell 2000</i>			16.3%		29.4%		26.9%		2.2%		4.5%		10.8%	Dec-90
Small Cap Growth	\$207,868,384	3.5%	16.4%		25.8%		26.8%		--		--		10.5%	Oct-08
<i>Russell 2000 Growth</i>			17.1%		32.1%		29.1%		2.2%		5.3%		10.8%	Oct-08
M.A. Weatherbie	\$100,824,364	1.7%	15.9%		25.5%		29.7%		4.4%		7.3%		11.0%	Dec-02
<i>Russell 2000 Growth</i>			17.1%		32.1%		29.1%		2.2%		5.3%		10.9%	Dec-02
Turner Investment Parters, Inc.	\$107,044,020	1.8%	16.9%		25.7%		--		--		--		25.7%	Jul-10
<i>Russell 2000 Growth</i>			17.1%		32.1%		29.1%		2.2%		5.3%		32.1%	Jul-10

Total Plan - Gross

Performance Summary

Name	Current Market Value	Current Allocation	Ending December 31, 2010									Inception		
			3 Mo	Rank	Fiscal YTD	Rank	1 Yr	Rank	3 Yrs	Rank	5 Yrs	Rank	Return	Since
Small Cap Value	\$210,730,092	3.6%	13.9%		25.8%		26.9%		--		--		8.3%	Oct-08
<i>Russell 2000 Value</i>			15.4%		26.6%		24.5%		2.2%		3.5%		5.5%	Oct-08
Dalton Greiner Hartman Maher	\$103,197,220	1.7%	13.8%		26.9%		32.2%		6.9%		7.8%		10.7%	Dec-00
<i>Russell 2000 Value</i>			15.4%		26.6%		24.5%		2.2%		3.5%		8.4%	Dec-00
Wedge Capital Management	\$57,828,082	1.0%	14.0%		26.3%		24.6%		--		--		5.1%	Apr-08
<i>Russell 2000 Value</i>			15.4%		26.6%		24.5%		2.2%		3.5%		3.9%	Apr-08
Thompson, Siegel & Walmsley	\$49,704,790	0.8%	14.2%		23.2%		19.5%		--		--		0.8%	Apr-08
<i>Russell 2000 Value</i>			15.4%		26.6%		24.5%		2.2%		3.5%		3.9%	Apr-08
Total International Equity	\$1,223,806,889	20.7%	6.9%	92	24.0%	81	11.6%	72	-3.8%	28	5.8%	25	7.0%	Dec-87
<i>MSCI EAFE</i>			6.6%	97	24.2%	77	7.8%	99	-7.0%	97	2.5%	96	5.4%	Dec-87
<i>MSCI AC World ex USA (Gross)</i>			7.3%	69	25.1%	46	11.6%	72	-4.6%	58	5.3%	43	6.6%	Dec-87
<i>Public Funds >\$1B - Non-US Eq Median</i>			7.5%		25.0%		12.8%		-4.4%		5.0%		--	Dec-87
Total International Equity-Established Markets	\$877,388,490	14.8%	7.6%		24.2%		9.7%		-5.6%		3.0%		3.8%	Mar-98
<i>MSCI EAFE</i>			6.6%		24.2%		7.8%		-7.0%		2.5%		3.8%	Mar-98
INVESCO	\$281,664,731	4.8%	7.3%		23.7%		7.0%		-4.6%		3.8%		5.3%	Mar-05
<i>MSCI EAFE</i>			6.6%		24.2%		7.8%		-7.0%		2.5%		4.4%	Mar-05
Capital Guardian Trust Company International Equity	\$238,651,238	4.0%	8.8%		24.9%		12.0%		-5.8%		2.9%		2.0%	Dec-99
<i>MSCI EAFE</i>			6.6%		24.2%		7.8%		-7.0%		2.5%		1.8%	Dec-99
<i>MSCI EAFE Growth</i>			7.9%		25.7%		12.2%		-5.9%		3.5%		-0.1%	Dec-99

Total Plan - Gross

Performance Summary

Name	Current Market Value	Current Allocation	Ending December 31, 2010										Inception	
			3 Mo	Rank	Fiscal YTD	Rank	1 Yr	Rank	3 Yrs	Rank	5 Yrs	Rank	Return	Since
LSV Asset Management International Equity	\$213,586,569	3.6%	5.1%		21.7%		4.1%		-9.4%		0.5%		2.8%	Dec-04
<i>MSCI EAFE</i>			6.6%		24.2%		7.8%		-7.0%		2.5%		4.2%	<i>Dec-04</i>
<i>MSCI EAFE Value</i>			5.3%		22.5%		3.2%		-8.1%		1.4%		3.3%	<i>Dec-04</i>
William Blair	\$80,348,326	1.4%	10.8%		29.2%		27.7%		--		--		17.1%	Sep-08
<i>MSCI Small Cap World ex US</i>			12.9%		32.9%		24.5%		0.6%		4.7%		17.4%	<i>Sep-08</i>
Mondrian Investment Partners	\$63,085,893	1.1%	9.1%		--		--		--		--		20.5%	Sep-10
<i>MSCI Small Cap World ex US</i>			12.9%		32.9%		24.5%		0.6%		4.7%		25.7%	<i>Sep-10</i>
Total International Equity-Emerging Markets	\$346,416,579	5.9%	5.2%		23.5%		16.8%		1.7%		15.1%		11.0%	Jan-00
<i>MSCI Emerging Markets Investable Market Index</i>			7.4%		27.1%		19.9%		3.0%		13.4%		11.4%	<i>Jan-00</i>
Capital Guardian Trust Company Emerging Markets Growth	\$346,416,579	5.9%	5.2%		23.5%		16.8%		1.7%		15.1%		11.0%	Jan-00
<i>MSCI Emerging Markets Investable Market Index</i>			7.4%		27.1%		19.9%		3.0%		13.4%		11.4%	<i>Jan-00</i>
Total Domestic Fixed Income	\$1,054,628,722	17.8%	0.0%	26	3.7%	38	10.5%	19	9.0%	4	7.7%	5	8.1%	Jun-86
<i>Barclays Capital Aggregate</i>			-1.3%	83	1.1%	93	6.5%	96	5.9%	69	5.8%	57	7.2%	<i>Jun-86</i>
<i>Public Funds >\$1B - US FI Median</i>			-0.5%		3.0%		9.0%		6.2%		5.9%		--	<i>Jun-86</i>
Neuberger Investment Management	\$343,952,723	5.8%	-0.7%		2.2%		9.7%		7.8%		6.9%		7.7%	May-88
<i>Barclays Capital Aggregate</i>			-1.3%		1.1%		6.5%		5.9%		5.8%		7.4%	<i>May-88</i>

Total Plan - Gross

Performance Summary

Name	Current Market Value	Current Allocation	Ending December 31, 2010									Inception		
			3 Mo	Rank	Fiscal YTD	Rank	1 Yr	Rank	3 Yrs	Rank	5 Yrs	Rank	Return	Since
Metropolitan West Asset Mgmt <i>Barclays Capital Aggregate</i>	\$361,773,901	6.1%	0.7%		4.5%		13.6%		10.4%		8.9%		7.4%	Dec-01
			-1.3%		1.1%		6.5%		5.9%		5.8%		5.6%	Dec-01
Bradford & Marzec, Inc <i>Barclays Capital Aggregate</i>	\$348,902,098	5.9%	0.0%		4.2%		8.4%		8.6%		7.2%		8.4%	Jun-88
			-1.3%		1.1%		6.5%		5.9%		5.8%		7.3%	Jun-88
Total Hedge Fund	\$291,927,103	4.9%	3.7%		8.8%		6.5%		-2.3%		3.0%		5.4%	Aug-04
<i>T-BILLS + 5%</i>			1.3%		2.6%		5.1%		5.5%		7.2%		7.3%	Aug-04
<i>CS Tremont Hedge Funds Long/Short Equity Index</i>			6.0%		12.9%		9.3%		1.6%		6.4%		8.1%	Aug-04
Blackstone Alternative Asset <i>T-BILLS + 5%</i>	\$146,018,383	2.5%	3.5%		8.5%		7.0%		-2.7%		2.8%		5.8%	Aug-04
<i>T-BILLS + 5%</i>			1.3%		2.6%		5.1%		5.5%		7.2%		7.3%	Aug-04
<i>CS Tremont Hedge Funds Long/Short Equity Index</i>			6.0%		12.9%		9.3%		1.6%		6.4%		8.1%	Aug-04
Grosvenor Capital Mgmt. <i>T-BILLS + 5%</i>	\$145,908,720	2.5%	3.9%		9.0%		6.0%		-1.8%		3.2%		4.8%	Aug-04
<i>T-BILLS + 5%</i>			1.3%		2.6%		5.1%		5.5%		7.2%		7.3%	Aug-04
<i>CS Tremont Hedge Funds Long/Short Equity Index</i>			6.0%		12.9%		9.3%		1.6%		6.4%		8.1%	Aug-04
Total Real Estate	\$722,997,727	12.2%	4.9%	21	15.0%	1	17.0%	1	-7.3%	33	0.7%	65	6.3%	Sep-87
<i>NCREIF Property Index</i>			4.6%	35	8.7%	62	13.1%	26	-4.2%	19	3.5%	17	7.0%	Sep-87
<i>Public Funds >\$1B - Real Estate Median</i>			3.8%		10.2%		11.0%		-8.5%		2.2%		--	Sep-87
Separate Account Portfolios *	\$376,703,063	6.4%	4.8%		12.5%		19.8%		--		--		-12.5%	Oct-08
<i>NCREIF Property Index</i>			4.6%		8.7%		13.1%		-4.2%		3.5%		-6.4%	Oct-08
BlackRock Realty Unleveraged <i>NCREIF Property Index</i>	--	--	3.2%		10.5%		16.5%		-3.5%		3.6%		9.6%	Sep-95
			4.6%		8.7%		13.1%		-4.2%		3.5%		9.1%	Sep-95

*Market values and quarterly performance provided by respective investment managers.

Total Plan - Gross

Performance Summary

Name	Current Market Value	Current Allocation	Ending December 31, 2010								Inception			
			3 Mo	Rank	Fiscal YTD	Rank	1 Yr	Rank	3 Yrs	Rank	5 Yrs	Rank	Return	Since
BlackRock Realty Leveraged <i>NCREIF Property Index</i>	\$170,428,635	2.9%	4.0%		13.9%		22.9%		-9.7%		0.9%		7.9%	Dec-98
			4.6%		8.7%		13.1%		-4.2%		3.5%		8.1%	Dec-98
BlackRock Realty Portfolio II Unleveraged <i>NCREIF Property Index</i>	--	--	2.7%		7.0%		13.0%		-5.8%		1.1%		7.4%	Sep-00
			4.6%		8.7%		13.1%		-4.2%		3.5%		7.5%	Sep-00
BlackRock Realty Portfolio II Leveraged <i>NCREIF Property Index</i>	\$74,740,281	1.3%	2.7%		7.0%		13.0%		-6.1%		1.4%		8.5%	Jun-04
			4.6%		8.7%		13.1%		-4.2%		3.5%		6.9%	Jun-04
Cornerstone Real Est Adv Unleveraged <i>NCREIF Property Index</i>	--	--	5.9%		11.4%		18.0%		-3.4%		1.8%		3.5%	May-04
			4.6%		8.7%		13.1%		-4.2%		3.5%		7.3%	May-04
Cornerstone Real Est Adv Leveraged <i>NCREIF Property Index</i>	\$131,534,147	2.2%	7.4%		14.4%		21.2%		-9.5%		-1.3%		2.1%	Apr-04
			4.6%		8.7%		13.1%		-4.2%		3.5%		7.2%	Apr-04
Value Added *	\$26,934,579	0.5%	4.2%		10.7%		-23.8%		--		--		-41.7%	Oct-08
<i>NCREIF + 2%</i>			4.3%		8.2%		7.8%		-2.6%		5.7%		-6.3%	Oct-08
UBS Realty Inv LLC Value Added <i>NCREIF + 2%</i>	\$16,825,368	0.3%	5.2%		12.7%		11.9%		-29.8%		--		-15.9%	Oct-06
			4.3%		8.2%		7.8%		-2.6%		5.7%		3.0%	Oct-06
AEW Cap Mgmt Value Added <i>NCREIF + 2%</i>	\$5,848,455	0.1%	4.2%		8.3%		2.1%		-22.8%		--		-19.4%	May-07
			4.3%		8.2%		7.8%		-2.6%		5.7%		0.6%	May-07
Hines Value Added <i>NCREIF + 2%</i>	\$4,260,756	0.1%	0.7%		5.3%		-71.1%		-49.0%		--		-47.7%	Jul-07
			4.3%		8.2%		7.8%		-2.6%		5.7%		-0.2%	Jul-07

*Market values, fund returns, and index returns are one quarter in arrears. Effective second quarter 2010, historical and current performance was provided by the respective investment managers.

Total Plan - Gross

Performance Summary

Name	Current Market Value	Current Allocation	Ending December 31, 2010								Inception				
			3 Mo	Rank	Fiscal YTD	Rank	1 Yr	Rank	3 Yrs	Rank	5 Yrs	Rank	Return	Since	
Limited Partnerships *	\$100,813,065	1.7%	4.6%		9.1%			14.0%		--		--		-16.9%	Oct-08
<i>NCREIF NFI ODCE</i>			5.0%		10.7%			16.4%		-9.7%		-0.2%		-13.2%	Oct-08
BlackRock Realty Granite Property Fund	\$39,714,719	0.7%	5.1%		12.2%			15.9%		-17.6%		-5.1%		-4.0%	Nov-05
<i>NCREIF NFI ODCE</i>			5.0%		10.7%			16.4%		-9.7%		-0.2%		0.2%	Nov-05
Cornerstone Real Est Adv Patriot Fund	\$61,090,250	1.0%	4.3%		7.2%			13.0%		-9.0%		0.2%		4.0%	Sep-04
<i>NCREIF NFI ODCE</i>			5.0%		10.7%			16.4%		-9.7%		-0.2%		3.6%	Sep-04
Heitman Advisory JMB V	\$8,096	0.0%	0.0%		0.1%			0.1%		0.7%		2.1%		10.5%	Mar-91
<i>NCREIF Property Index</i>			4.6%		8.7%			13.1%		-4.2%		3.5%		7.1%	Mar-91
REITS	\$218,547,020	3.7%	5.4%		23.8%			21.0%		--		--		3.9%	Oct-08
<i>FTSE NAREIT Equity REIT</i>			7.4%		21.2%			27.9%		0.7%		3.0%		0.1%	Oct-08
Principal Global Investors	\$52,992,586	0.9%	6.5%		20.8%			26.8%		3.1%		--		2.8%	Feb-06
<i>FTSE NAREIT Equity REIT</i>			7.4%		21.2%			27.9%		0.7%		3.0%		1.3%	Feb-06
Urdang Investment Mgmt. Inc.	\$57,809,778	1.0%	7.6%		23.1%			30.7%		5.3%		--		4.7%	Feb-06
<i>FTSE NAREIT Equity REIT</i>			7.4%		21.2%			27.9%		0.7%		3.0%		1.3%	Feb-06
CB Richard Ellis Global	\$107,744,656	1.8%	3.7%		25.6%			13.9%		--		--		30.4%	Oct-08
<i>FTSE/EPRA NARIET Global Developed ex-US</i>			5.2%		28.3%			16.0%		--		--		25.3%	Oct-08

*Market values and quarterly performance provided by respective investment managers.

Total Plan - Gross

Performance Summary

Name	Current Market Value	Current Allocation	Ending December 31, 2010								Inception				
			3 Mo	Rank	Fiscal YTD	Rank	1 Yr	Rank	3 Yrs	Rank	5 Yrs	Rank	Return	Since	
Private Equity *	\$52,214,925	0.9%	4.4%		0.6%			1.3%		-22.0%		--		-22.0%	Dec-07
HarbourVest	\$26,255,691	0.4%	4.7%		7.4%			14.1%		-0.1%		--		-0.1%	Dec-07
S&P 500 +2%			11.7%		-0.9%			12.2%		-5.1%		2.7%		-5.1%	Dec-07
Goldman Sachs & Company	\$18,606,489	0.3%	7.8%		-7.0%			-10.5%		--		--		-38.6%	Jun-08
S&P 500 +2%			11.7%		-0.9%			12.2%		-5.1%		2.7%		-1.6%	Jun-08
Abbott Capital Management	\$6,354,007	0.1%	-2.4%		-4.8%			-9.7%		--		--		-17.9%	Jul-08
S&P 500 +2%			11.7%		-0.9%			12.2%		-5.1%		2.7%		-3.5%	Jul-08
Harbourvest International Private Equity	\$998,739	0.0%	-11.0%		-6.7%			-52.8%		--		--		-52.2%	Feb-09
S&P 500 +2%			11.7%		-0.9%			12.2%		-5.1%		2.7%		18.7%	Feb-09
Opportunistic	\$244,551,878	4.1%	10.2%		20.9%			23.5%		1.0%		--		1.0%	Oct-07
PIMCO Advisors Inst Services Distressed Mortgage Fund**	\$44,917,332	0.8%	6.0%		20.8%			48.6%		11.9%		--		11.3%	Oct-07
Barclays Capital Aggregate			-1.3%		1.1%			6.5%		5.9%		5.8%		6.3%	Oct-07
State Street Global Advisors Real Asset Strategy	\$33,474,826	0.6%	9.8%		21.6%			16.0%		--		--		-4.2%	Feb-08
Blended Benchmark***			9.8%		21.6%			16.2%		--		--		-1.3%	Feb-08
Stone Tower Capital****	\$35,969,725	0.6%	9.4%		11.5%			23.6%		--		--		30.9%	Feb-09
Barclays Aggregate Qtr Arrears			2.5%		6.1%			8.2%		7.4%		6.2%		9.8%	Feb-09
PIMCO TALF Investment and Recovery*****	\$1,972,447	0.0%	1.3%		3.4%			19.6%		--		--		19.7%	Jul-09
Barclays Capital Aggregate			-1.3%		1.1%			6.5%		5.9%		5.8%		6.3%	Jul-09
METWEST Enhanced TALF *****	\$15,043,447	0.3%	1.1%		6.7%			15.1%		--		--		15.3%	Jun-09
Barclays Capital Aggregate			-1.3%		1.1%			6.5%		5.9%		5.8%		7.0%	Jun-09

*Investment manager and index returns are one quarter in arrears

** Historical and current performance provided by investment manager

*** The benchmark is a blend of 30% DJ Wilshire REIT, 25% S&P GSCI, 25% MSCI World Natural Resources, and 20% Barclays Capital US TIPS. Provided by SSgA

**** Manager and Index returns are one quarter in arrears

***** Effective second quarter 2010, historical and current performance was provided by the respective investment managers

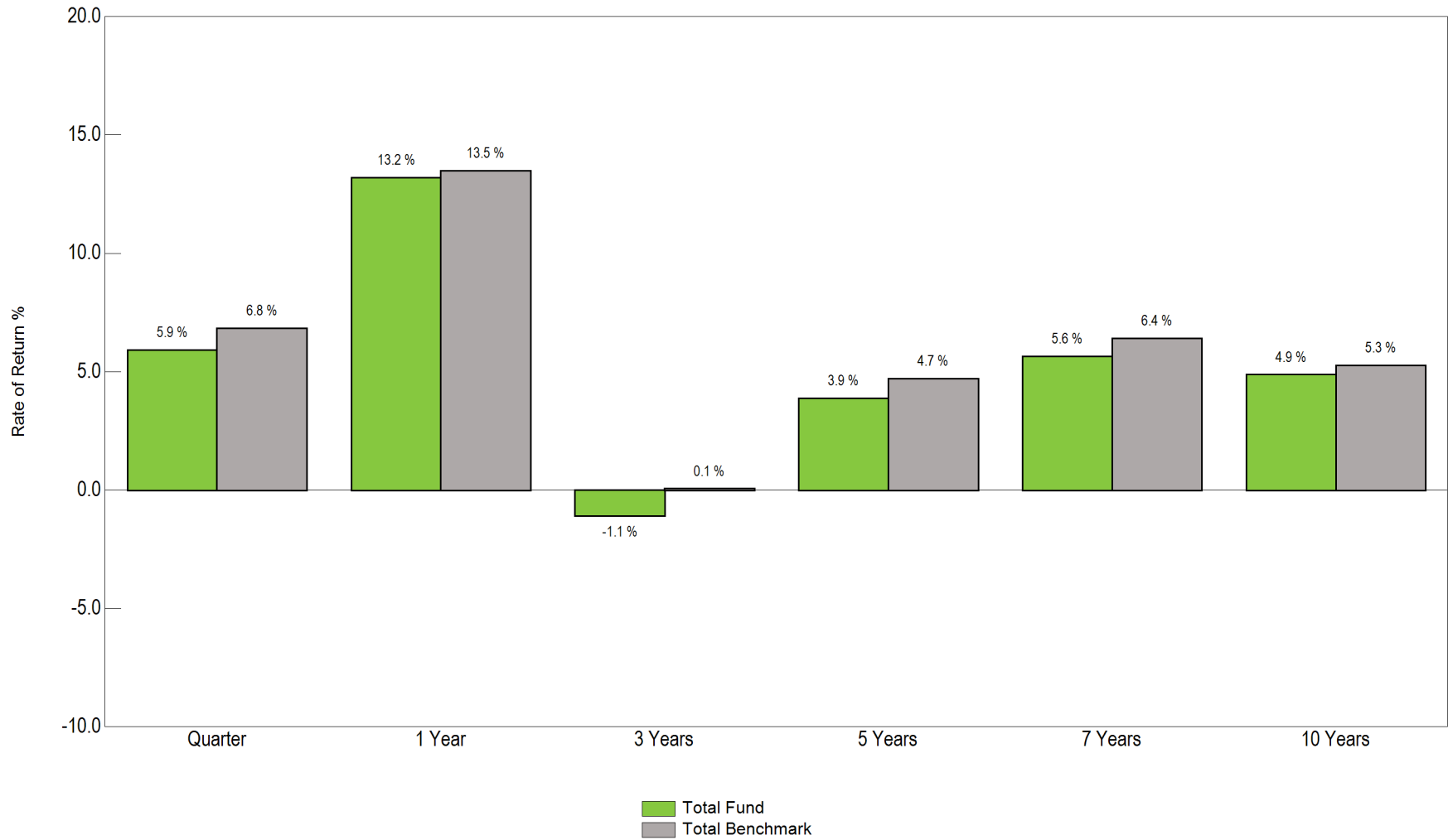
Total Plan - Gross

Performance Summary

Name	Current Market Value	Current Allocation	Ending December 31, 2010								Inception			
			3 Mo	Rank	Fiscal YTD	Rank	1 Yr	Rank	3 Yrs	Rank	5 Yrs	Rank	Return	Since
Commodities	\$113,174,101	1.9%	14.8%		28.3%		16.3%		--		--		-4.8%	Apr-08
Neuberger Investment Management <i>Dow Jones UBS Commodity Index</i>	\$44,754,730	0.8%	15.8%		29.9%		19.5%		--		--		-11.5%	Apr-08
			15.8%		29.2%		16.8%		-3.7%		1.2%		-8.6%	Apr-08
Blackstone Alternatives Asset <i>Dow Jones UBS Commodity Index</i>	\$68,419,371	1.2%	14.1%		27.3%		14.3%		--		--		2.5%	Apr-08
			15.8%		29.2%		16.8%		-3.7%		1.2%		-8.6%	Apr-08
Total Cash	\$295,872,466	5.0%	0.1%		0.2%		0.3%		0.2%		2.2%		4.1%	Jun-92
<i>Citigroup 3mth Treasury Bill</i>			0.0%		0.1%		0.1%		0.7%		2.3%		3.4%	Jun-92
Cash	\$295,872,466	5.0%	0.1%		0.2%		0.3%		0.8%		2.5%		4.2%	Jun-92
<i>Citigroup 3mth Treasury Bill</i>			0.0%		0.1%		0.1%		0.7%		2.3%		3.4%	Jun-92
SSGA Overlay	\$122,640,632	2.1%												
Westridge	\$30,286,095	0.5%												

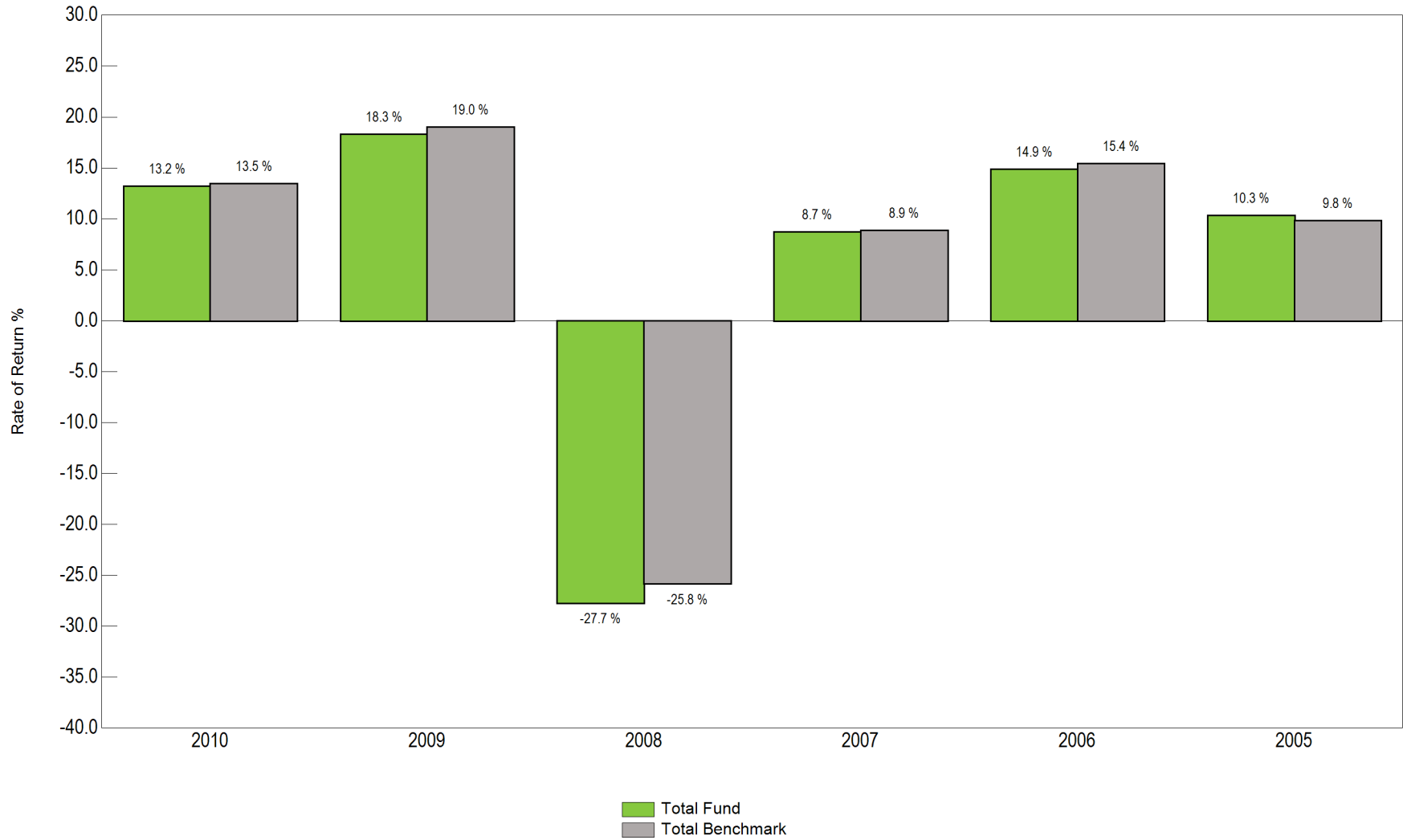
Total Plan Performance

Fund Return vs. Benchmark Portfolio Return



Total Plan Performance

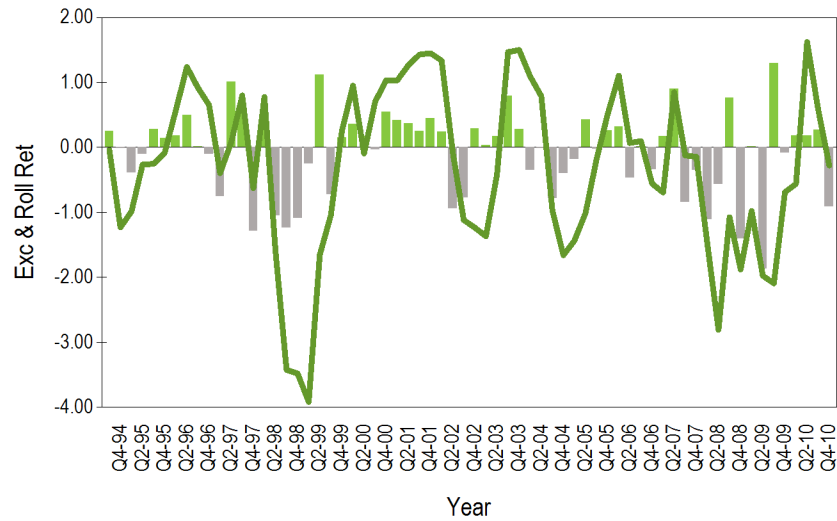
Fund Return vs. Benchmark Portfolio Return



Total Plan

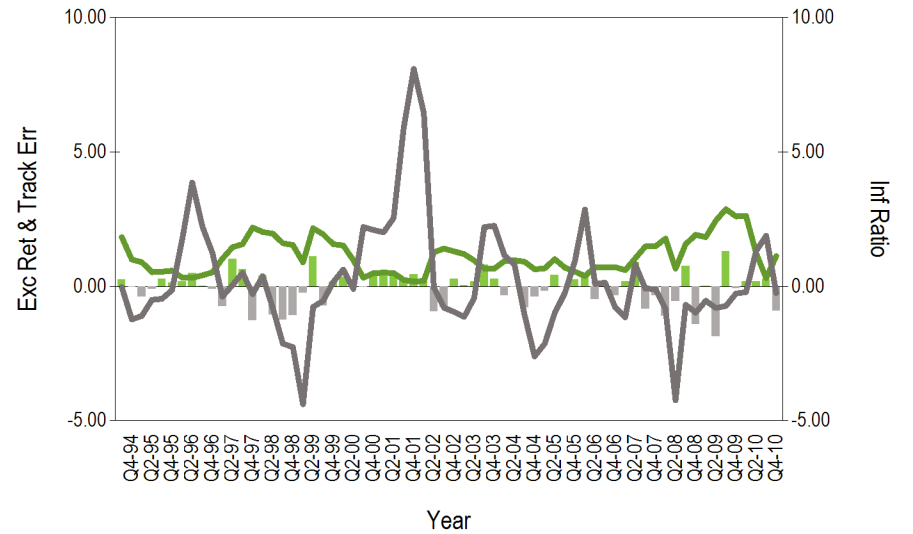
Performance and Risk

Excess Performance
16 Years 6 Months Ending December 31, 2010



- Quarterly Out Performance
- Quarterly Under Performance
- Rolling 1 Year Excess Performance vs. Total Benchmark

Tracking Error and Information Ratio
16 Years 6 Months Ending December 31, 2010

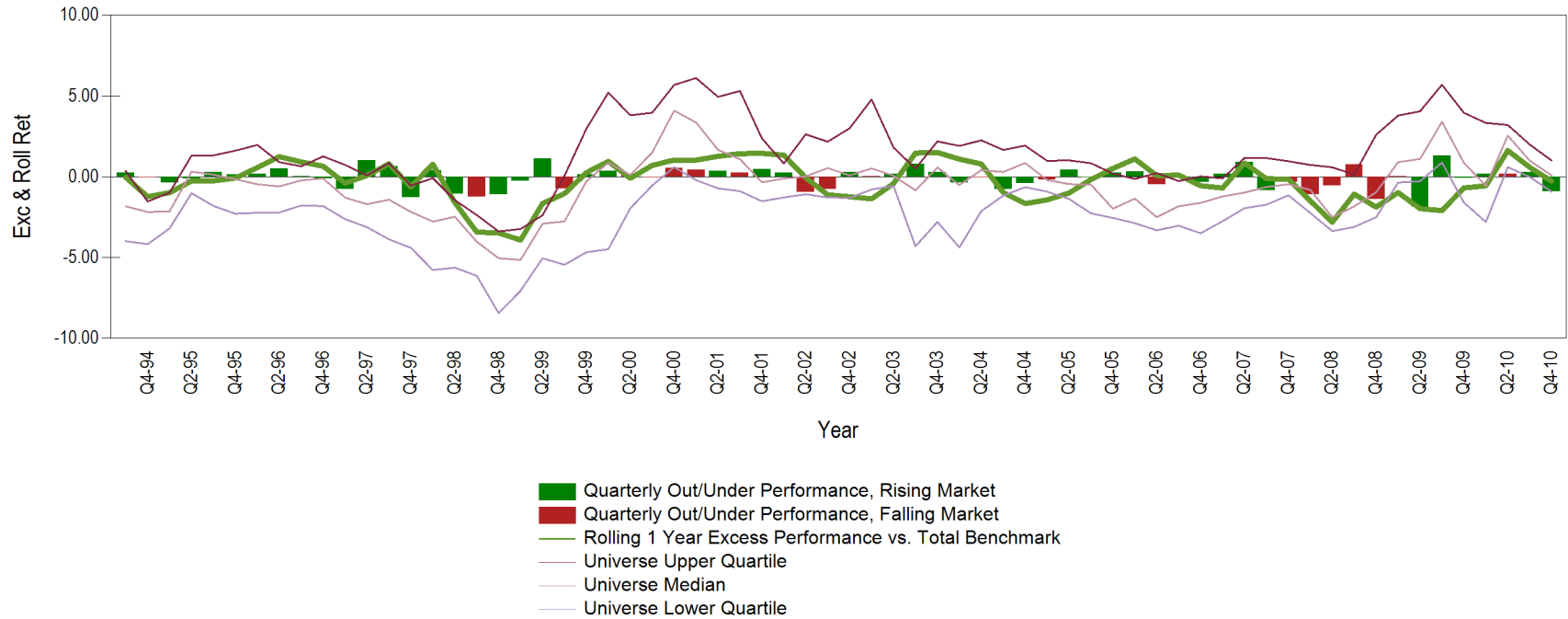


- Quarterly Out Performance
- Quarterly Under Performance
- Rolling 1 Year Tracking Error vs. Total Benchmark
- Rolling 1 Year Information Ratio vs. Total Benchmark

Total Plan

Performance and Risk

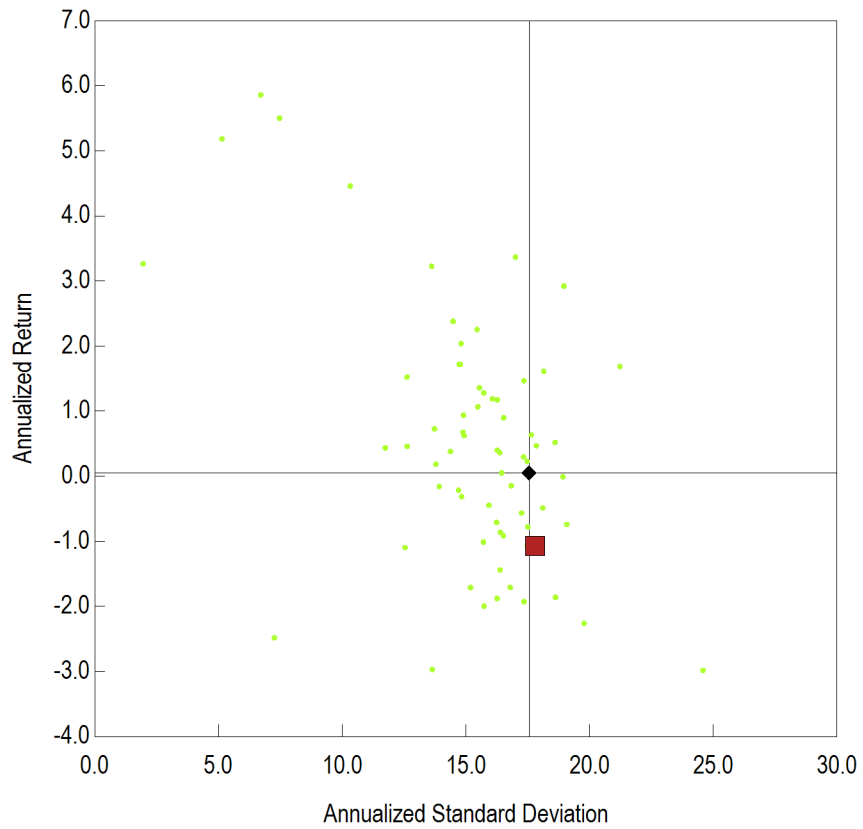
Performance During Rising and Falling Markets
16 Years 6 Months Ending December 31, 2010



Total Plan

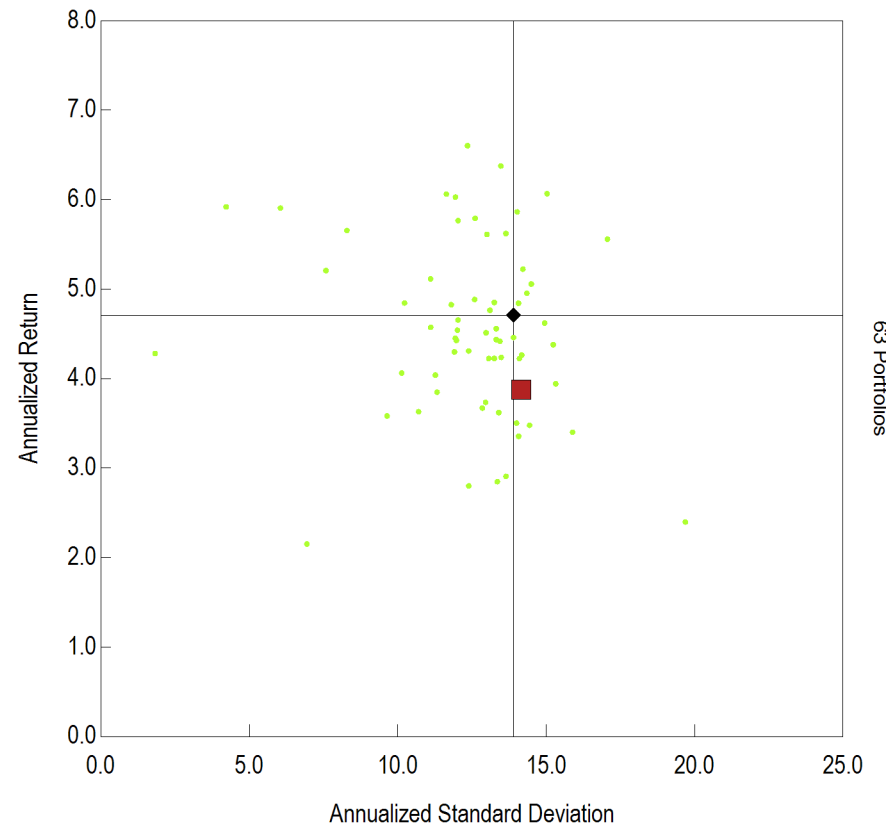
Performance and Risk

Annualized Return vs. Annualized Standard Deviation
3 Years Ending December 31, 2010



- Total Fund
- ◆ Total Benchmark
- Public Funds >\$1B (peer)

Annualized Return vs. Annualized Standard Deviation
5 Years Ending December 31, 2010



- Total Fund
- ◆ Total Benchmark
- Public Funds >\$1B (peer)

Total Plan

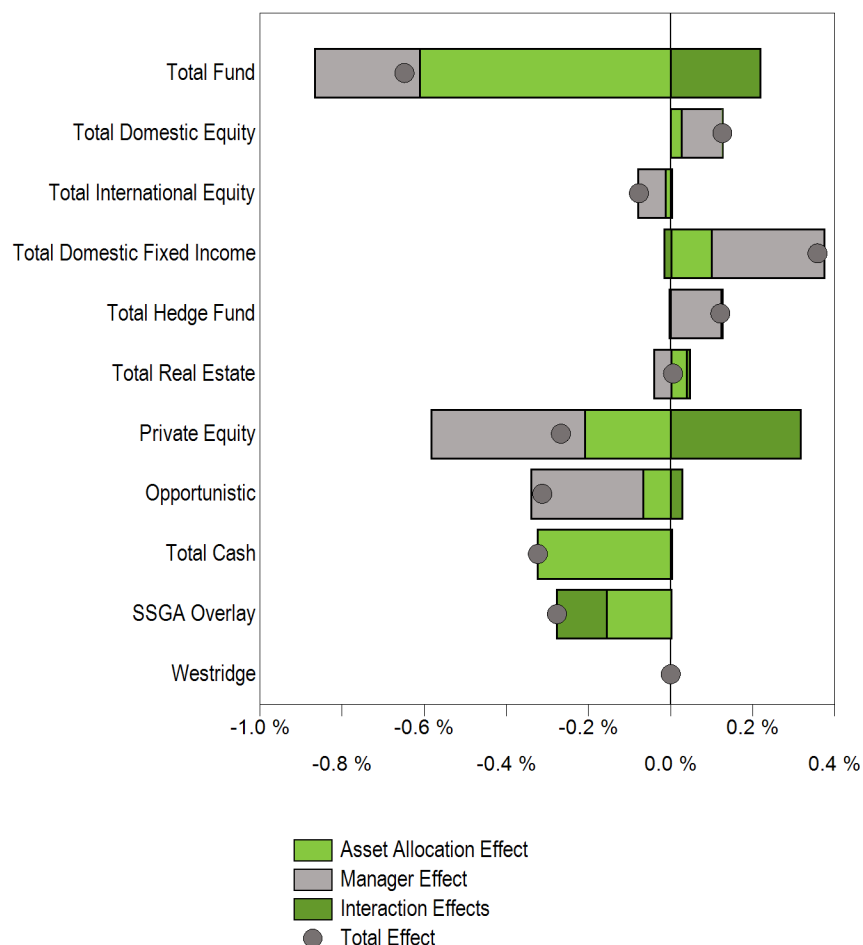
Performance Attribution

Performance Attribution Quarter Ending December 31, 2010

	Quarter	1 Yr	3 Yrs	2010	2009	2008	2007
Total Fund Return	6.2%	13.6%	-1.3%	13.6%	18.4%	-28.4%	8.7%
Policy Benchmark **	6.8%	13.5%	0.1%	13.5%	19.0%	-25.8%	8.9%
Excess Return	-0.7%	0.1%	-1.3%	0.1%	-0.6%	-2.6%	-0.1%
Selection Effect	-0.3%	1.0%	-1.7%	1.0%	-3.5%	-2.2%	0.0%
Asset Allocation Effect	-0.6%	-1.6%	-0.9%	-1.6%	-2.9%	1.0%	0.0%
Interaction Effect	0.2%	0.8%	1.3%	0.8%	6.1%	-1.5%	-0.1%
Returns by Asset Class							
Total Fund	5.9%	13.2%	-1.1%	13.2%	18.3%	-27.7%	8.7%
Total Domestic Equity	11.9%	18.3%	-2.7%	18.3%	26.9%	-38.7%	4.6%
Total Large Cap	11.0%	16.0%	-3.7%	16.0%	27.2%	-39.5%	4.9%
Large Cap Core Index	11.1%	15.9%	-2.4%	15.9%	28.5%	-37.5%	
Enhanced Large Cap Core Index	11.1%	17.0%		17.0%	-2.2%		
Equity Active Extension (130/30)	11.6%	13.2%		13.2%	33.5%		
Large Cap Growth	12.3%	19.0%	-4.2%	19.0%	35.4%	-45.4%	
Large Cap Value	9.3%	15.2%		15.2%	31.0%		
Total Small Cap	15.2%	27.0%	1.1%	27.0%	25.6%	-35.3%	2.4%
Small Cap Growth	16.4%	26.8%	-1.3%	26.8%	30.3%	-41.7%	
Small Cap Value	13.9%	26.9%		26.9%	22.2%		
Total International Equity	6.9%	11.6%	-3.8%	11.6%	44.2%	-44.6%	15.9%
Total International Equity-Established Markets	7.6%	9.7%	-5.6%	9.7%	34.4%	-43.0%	8.5%
Total International Equity-Emerging Markets	5.2%	16.8%	1.7%	16.8%	77.8%	-49.3%	39.4%
Total Domestic Fixed Income	0.0%	10.5%	9.0%	10.5%	17.1%	-0.1%	6.4%
Total Hedge Fund	3.7%	6.5%	-2.3%	6.5%	12.0%	-21.8%	12.6%
Total Real Estate	4.9%	17.0%	-7.3%	17.0%	-19.2%	-15.7%	11.6%
Separate Account Portfolios	4.8%	19.8%		19.8%	-28.8%		
Value Added	3.9%	-24.0%	-34.3%	-24.0%	-60.5%	-5.5%	
Limited Partnerships	4.6%	14.0%		14.0%	-33.1%		

Total Plan Attribution

Attribution Effects Relative to Total Fund Attribution Benchmark
3 Months Ending December 31, 2010



Attribution Summary
3 Months Ending December 31, 2010

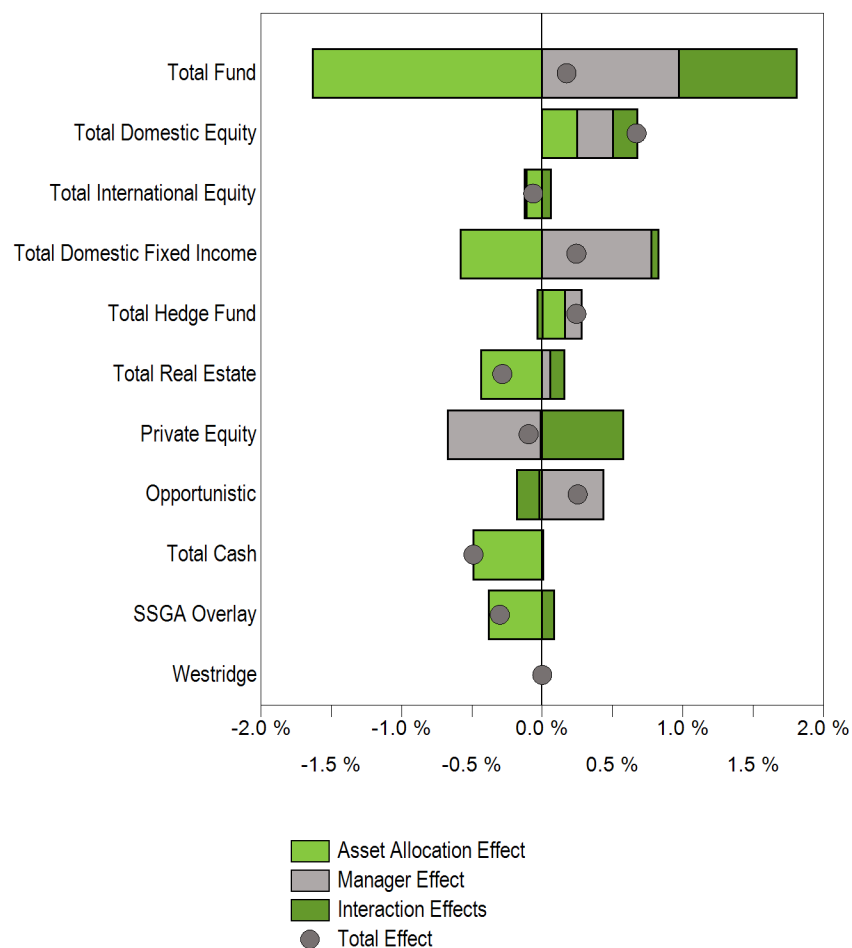
	Actual Return	Target Return	Relative Return	Manager Effect	Asset Allocation Effect	Interaction Effects	Total Effects
Total Domestic Equity	11.9%	11.6%	0.3%	0.1%	0.0%	0.0%	0.1%
Total International Equity	6.9%	7.2%	-0.3%	-0.1%	0.0%	0.0%	-0.1%
Total Domestic Fixed Income	0.0%	-1.3%	1.3%	0.3%	0.1%	0.0%	0.4%
Total Hedge Fund	3.7%	1.3%	2.4%	0.1%	0.0%	0.0%	0.1%
Total Real Estate	4.9%	5.2%	-0.3%	0.0%	0.0%	0.0%	0.0%
Private Equity	4.4%	11.7%	-7.3%	-0.4%	-0.2%	0.3%	-0.3%
Opportunistic	10.2%	15.8%	-5.6%	-0.3%	-0.1%	0.0%	-0.3%
Total Cash	0.1%	0.0%	0.0%	0.0%	-0.3%	0.0%	-0.3%
Total	6.2%	6.8%	-0.7%	-0.3%	-0.6%	0.2%	-0.6%

Attribution Summary
3 Months Ending December 31, 2010

	Relative Amount	Manager Effect	Asset Allocation Effect	Interaction Effects	Total Effects
Total Domestic Equity	\$5,971,425.5	\$5,571,496.0	\$1,529,809.3	\$27,280.2	\$7,128,585.5
Total International Equity	-\$3,468,167.7	-\$3,708,773.0	-\$771,629.1	\$87,922.3	-\$4,392,479.8
Total Domestic Fixed Income	\$14,100,305.1	\$15,511,411.1	\$5,634,362.3	-\$873,801.7	\$20,271,971.8
Total Hedge Fund	\$6,944,296.9	\$6,978,352.7	-\$191,447.8	\$61,377.4	\$6,848,282.3
Total Real Estate	-\$1,930,671.8	-\$2,278,584.5	\$2,200,547.2	\$399,863.1	\$321,825.8
Private Equity	-\$3,174,610.4	-\$21,112,732.7	-\$11,939,428.7	\$17,889,416.1	-\$15,162,745.3
Opportunistic	-\$13,506,073.2	-\$15,341,023.5	-\$3,907,743.3	\$1,512,234.4	-\$17,736,532.4
Total Cash	\$34,174.9	\$0.0	-\$18,377,315.4	\$32,539.1	-\$18,344,776.3
Total		-\$14,379,854.0	-\$34,717,741.7	\$12,329,308.1	-\$36,768,287.5

Total Plan Attribution

**Attribution Effects Relative to Total Fund Attribution Benchmark
1 Year Ending December 31, 2010**



**Attribution Summary
1 Year Ending December 31, 2010**

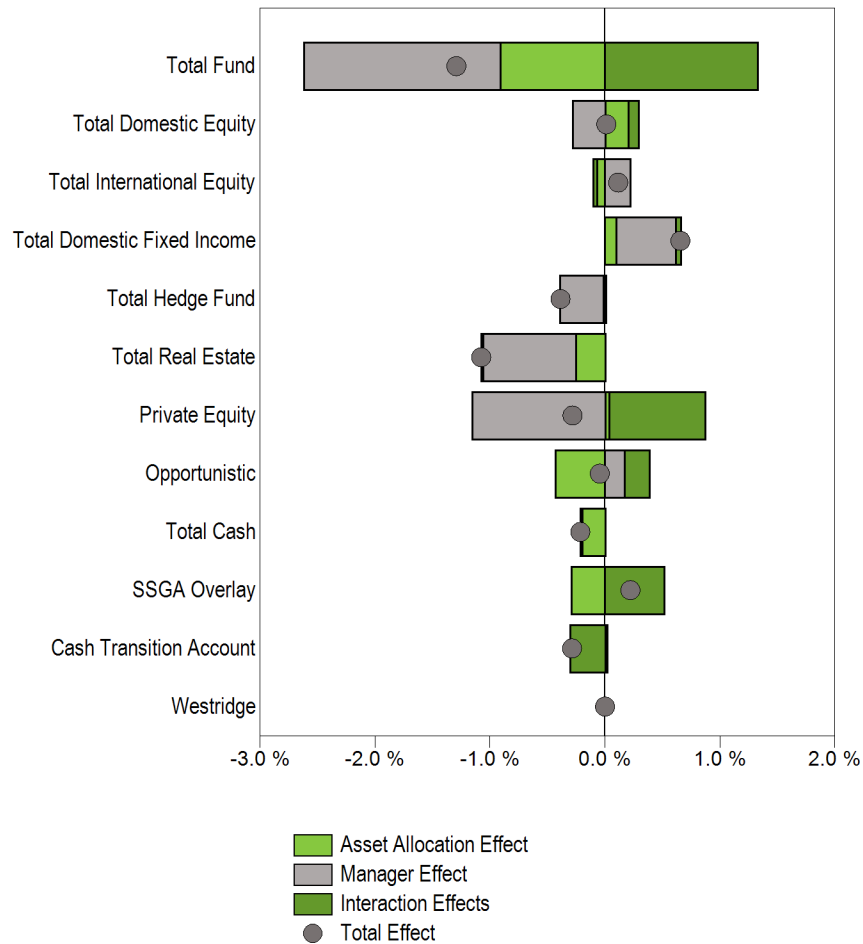
	Actual Return	Target Return	Relative Return	Manager Effect	Asset Allocation Effect	Interaction Effects	Total Effects
Total Domestic Equity	18.3%	16.9%	1.4%	0.3%	0.2%	0.2%	0.7%
Total International Equity	11.6%	11.2%	0.4%	0.0%	-0.1%	0.1%	-0.1%
Total Domestic Fixed Income	10.5%	6.5%	4.0%	0.8%	-0.6%	0.0%	0.2%
Total Hedge Fund	6.5%	5.1%	1.4%	0.1%	0.2%	0.0%	0.2%
Total Real Estate	17.0%	16.3%	0.7%	0.1%	-0.4%	0.1%	-0.3%
Private Equity	1.3%	12.2%	-10.8%	-0.7%	0.0%	0.6%	-0.1%
Opportunistic	23.5%	16.8%	6.7%	0.4%	0.0%	-0.2%	0.3%
Total Cash	0.3%	0.1%	0.1%	0.0%	-0.5%	0.0%	-0.5%
Total	13.6%	13.5%	0.1%	1.0%	-1.6%	0.8%	0.2%

**Attribution Summary
1 Year Ending December 31, 2010**

	Relative Amount	Manager Effect	Asset Allocation Effect	Interaction Effects	Total Effects
Total Domestic Equity	\$23,021,998.0	\$13,643,425.8	\$13,132,811.6	\$8,921,100.4	\$35,697,337.8
Total International Equity	\$4,823,827.1	-\$281,940.9	-\$6,233,351.9	\$3,100,415.4	-\$3,414,877.4
Total Domestic Fixed Income	\$41,463,613.6	\$41,209,744.8	-\$30,779,044.5	\$2,477,044.8	\$12,907,745.1
Total Hedge Fund	\$3,840,034.1	\$6,127,046.0	\$8,550,691.1	-\$1,785,198.1	\$12,892,539.1
Total Real Estate	\$4,772,744.1	\$2,986,552.1	-\$23,167,812.0	\$5,089,938.4	-\$15,091,321.5
Private Equity	-\$3,944,845.3	-\$34,812,950.7	-\$785,879.9	\$30,453,258.4	-\$5,145,572.2
Opportunistic	\$16,981,727.7	\$22,924,506.1	-\$1,221,604.0	-\$8,296,885.9	\$13,406,016.3
Total Cash	\$159,085.3	\$0.0	-\$26,115,313.4	\$111,942.4	-\$26,003,370.9
Total		\$51,796,383.3	-\$86,800,460.9	\$44,223,983.2	\$9,219,905.5

Total Plan Attribution

**Attribution Effects Relative to Total Fund Attribution Benchmark
3 Years Ending December 31, 2010**



**Attribution Summary
3 Years Ending December 31, 2010**

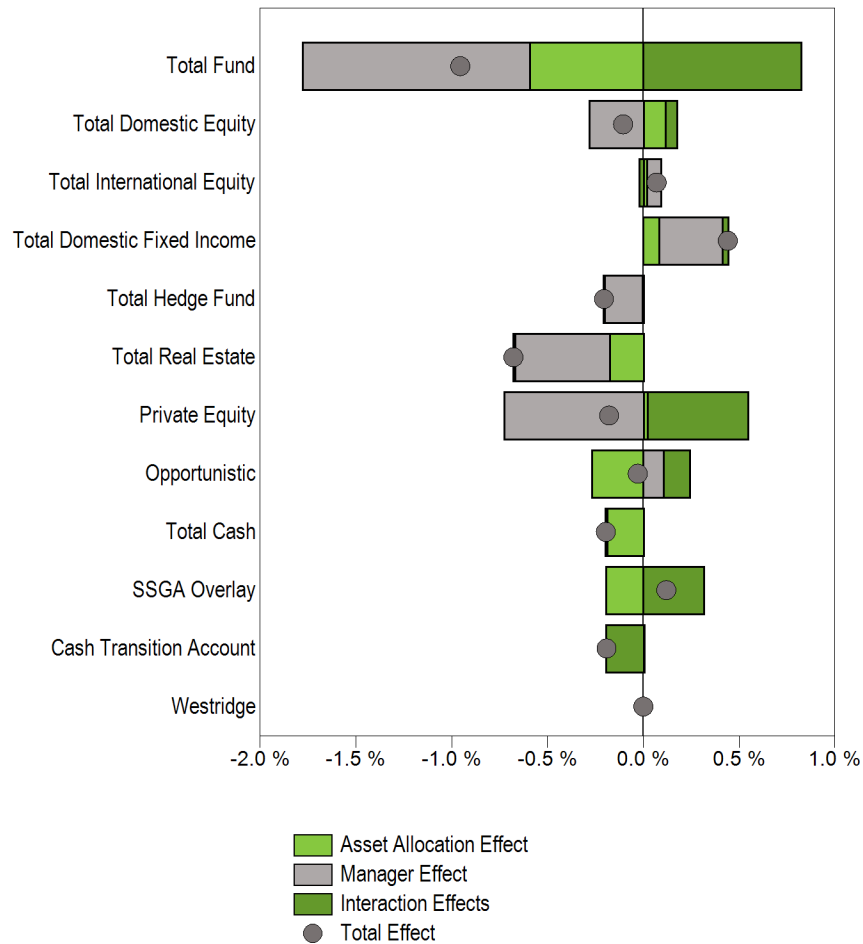
	Actual Return	Target Return	Relative Return	Manager Effect	Asset Allocation Effect	Interaction Effects	Total Effects
Total Domestic Equity	-2.7%	-2.0%	-0.7%	-0.3%	0.2%	0.1%	0.0%
Total International Equity	-3.8%	-5.0%	1.3%	0.2%	-0.1%	0.0%	0.1%
Total Domestic Fixed Income	9.0%	5.9%	3.1%	0.5%	0.1%	0.0%	0.7%
Total Hedge Fund	-2.3%	5.5%	-7.8%	-0.4%	0.0%	0.0%	-0.4%
Total Real Estate	-7.3%	-1.8%	-5.5%	-0.8%	-0.3%	0.0%	-1.1%
Private Equity	-22.0%	-5.1%	-16.9%	-1.2%	0.0%	0.8%	-0.3%
Opportunistic	1.0%	-3.7%	4.7%	0.2%	-0.4%	0.2%	0.0%
Total Cash	0.2%	0.7%	-0.5%	0.0%	-0.2%	0.0%	-0.2%
Total	-1.3%	0.1%	-1.3%	-1.7%	-0.9%	1.3%	-1.3%

**Attribution Summary
3 Years Ending December 31, 2010**

	Relative Amount	Manager Effect	Asset Allocation Effect	Interaction Effects	Total Effects
Total Domestic Equity	-\$10,182,678.0	-\$14,452,265.7	\$10,524,331.9	\$4,499,380.3	\$571,446.5
Total International Equity	\$11,989,611.2	\$11,160,913.6	-\$3,769,278.6	-\$1,480,843.3	\$5,910,791.7
Total Domestic Fixed Income	\$37,814,806.5	\$26,753,646.6	\$5,079,126.2	\$2,020,105.1	\$33,852,877.9
Total Hedge Fund	-\$22,482,291.6	-\$19,072,246.3	-\$949,236.4	\$33,654.1	-\$19,987,828.5
Total Real Estate	-\$34,930,211.2	-\$41,850,673.5	-\$13,113,259.7	-\$660,831.8	-\$55,624,765.0
Private Equity	-\$12,210,536.8	-\$59,535,210.0	\$1,863,949.6	\$43,059,830.8	-\$14,611,429.6
Opportunistic	\$10,618,188.6	\$8,941,404.2	-\$22,071,676.4	\$10,787,395.2	-\$2,342,876.9
Total Cash	-\$595,269.8	\$0.0	-\$10,394,028.8	-\$688,225.7	-\$11,082,254.5
Total		-\$88,054,431.1	-\$47,127,615.9	\$68,430,715.3	-\$66,751,331.7

Total Plan Attribution

**Attribution Effects Relative to Total Fund Attribution Benchmark
5 Years Ending December 31, 2010**



**Attribution Summary
5 Years Ending December 31, 2010**

	Actual Return	Target Return	Relative Return	Manager Effect	Asset Allocation Effect	Interaction Effects	Total Effects
Total Domestic Equity	2.0%	2.7%	-0.7%	-0.3%	0.1%	0.1%	-0.1%
Total International Equity	5.8%	5.2%	0.5%	0.1%	0.0%	0.0%	0.1%
Total Domestic Fixed Income	7.7%	5.8%	1.9%	0.3%	0.1%	0.0%	0.4%
Total Hedge Fund	3.0%	7.2%	-4.2%	-0.2%	0.0%	0.0%	-0.2%
Total Real Estate	0.7%	4.1%	-3.4%	-0.5%	-0.2%	0.0%	-0.7%
Private Equity	--	--	--	-0.7%	0.0%	0.5%	-0.2%
Opportunistic	--	--	--	0.1%	-0.3%	0.1%	0.0%
Total Cash	2.2%	2.3%	-0.1%	0.0%	-0.2%	0.0%	-0.2%
Total	3.7%	4.7%	-1.0%	-1.2%	-0.6%	0.8%	-1.0%

**Attribution Summary
5 Years Ending December 31, 2010**

	Relative Amount	Manager Effect	Asset Allocation Effect	Interaction Effects	Total Effects
Total Domestic Equity	-\$11,420,380.0	-\$14,910,726.5	\$6,270,849.8	\$2,988,837.6	-\$5,651,039.1
Total International Equity	\$6,135,245.0	\$3,859,200.6	\$990,652.4	-\$1,147,677.6	\$3,702,175.3
Total Domestic Fixed Income	\$23,241,621.3	\$17,805,080.5	\$4,396,516.0	\$1,346,043.6	\$23,547,640.2
Total Hedge Fund	-\$11,835,907.3	-\$10,503,967.6	-\$308,172.1	-\$172,787.4	-\$10,984,927.0
Total Real Estate	-\$22,290,066.6	-\$26,452,355.6	-\$9,375,349.6	-\$403,373.1	-\$36,231,078.3
Private Equity	-\$6,661,054.7	-\$38,709,956.3	\$1,170,906.2	\$27,988,793.3	-\$9,550,256.9
Opportunistic	\$3,494,473.8	\$5,769,988.5	-\$14,332,674.3	\$7,005,902.1	-\$1,556,783.6
Total Cash	-\$140,874.8	\$0.0	-\$10,213,889.6	-\$249,138.7	-\$10,463,028.3
Total		-\$63,142,736.5	-\$31,747,248.5	\$43,839,883.0	-\$51,050,102.0