



Databases, Tables & Calculators by Subject

FONT SIZE:  Change Output Options: From: 2002 To: 2012  include graphs[More Formatting Options](#) 

Data extracted on: January 23, 2013 (12:36:16 PM)

Consumer Price Index - All Urban Consumers

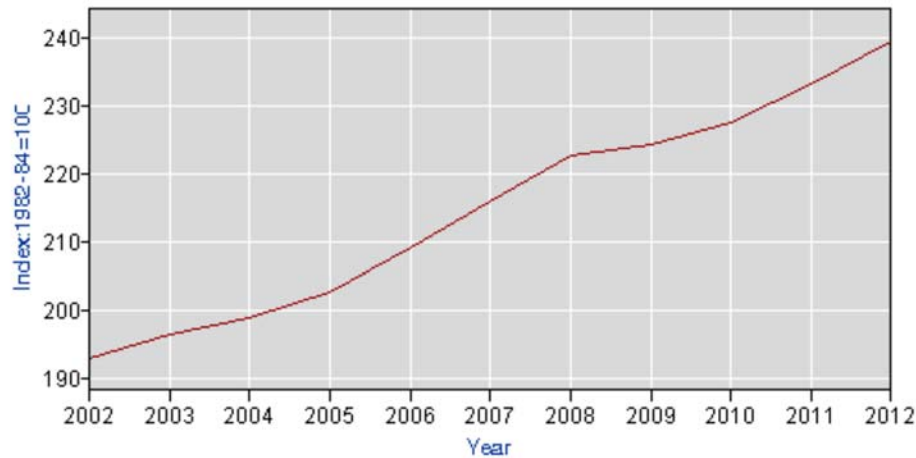

Series Id: CUURA422SA0

Not Seasonally Adjusted

Area: San Francisco-Oakland-San Jose, CA

Item: All items

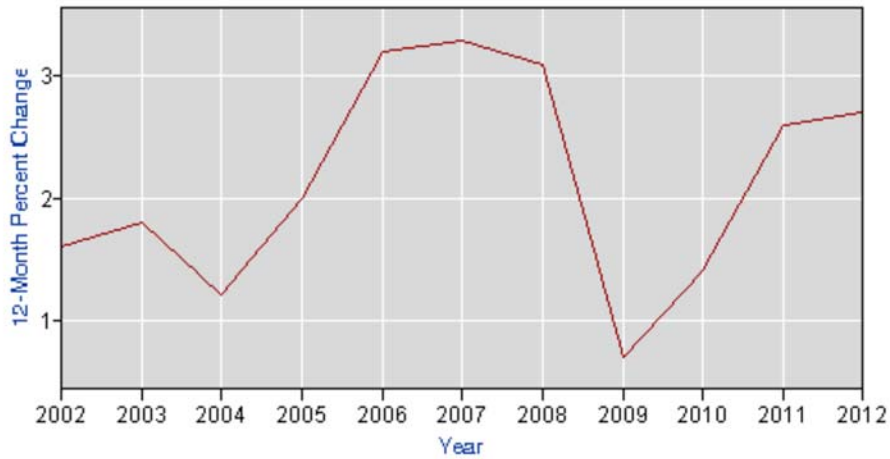

Base Period: 1982-84=100

Download:  .xls

Year	Jan	Feb	Mar	Apr	May	Jun	Jul	Aug	Sep	Oct	Nov	Dec	Annual	HALF1	HALF2
2002		191.3		193.0		193.2		193.5		194.3		193.2	193.0	192.3	193.7
2003		197.7		197.3		196.3		196.3		196.3		195.3	196.4	196.8	196.1
2004		198.1		198.3		199.0		198.7		200.3		199.5	198.8	198.2	199.5
2005		201.2		202.5		201.2		203.0		205.9		203.4	202.7	201.5	203.9
2006		207.1		208.9		209.1		210.7		211.0		210.4	209.2	207.9	210.6
2007		213.688		215.842		216.123		216.240		217.949		218.485	216.048	214.736	217.361
2008		219.612		222.074		225.181		225.411		225.824		218.528	222.767	221.730	223.804
2009		222.166		223.854		225.692		225.801		226.051		224.239	224.395	223.305	225.484
2010		226.145		227.697		228.110		227.954		228.107		227.658	227.469	226.994	227.944
2011		229.981		234.121		233.646		234.608		235.331		234.327	233.390	232.082	234.698
2012		236.880		238.985		239.806		241.170		242.834		239.533	239.650	238.099	241.201

12-Month Percent Change**Series Id:** CUURA422SA0

Not Seasonally Adjusted

Area: San Francisco-Oakland-San Jose, CA**Item:** All items**Base Period:** 1982-84=100Download:  [.xls](#)

Year	Jan	Feb	Mar	Apr	May	Jun	Jul	Aug	Sep	Oct	Nov	Dec	Annual	HALF1	HALF2
2002		1.8		2.1		1.2		1.3		1.4		1.4	1.6	1.9	1.4
2003		3.3		2.2		1.6		1.4		1.0		1.1	1.8	2.3	1.2
2004		0.2		0.5		1.4		1.2		2.0		2.2	1.2	0.7	1.7
2005		1.6		2.1		1.1		2.2		2.8		2.0	2.0	1.7	2.2
2006		2.9		3.2		3.9		3.8		2.5		3.4	3.2	3.2	3.3
2007		3.2		3.3		3.4		2.6		3.3		3.8	3.3	3.3	3.2
2008		2.8		2.9		4.2		4.2		3.6		0.0	3.1	3.3	3.0
2009		1.2		0.8		0.2		0.2		0.1		2.6	0.7	0.7	0.8
2010		1.8		1.7		1.1		1.0		0.9		1.5	1.4	1.7	1.1
2011		1.7		2.8		2.4		2.9		3.2		2.9	2.6	2.2	3.0
2012		3.0		2.1		2.6		2.8		3.2		2.2	2.7	2.6	2.8

TOOLS

Areas at a Glance
 Industries at a Glance
 Economic Releases
 Databases & Tables
 Maps

CALCULATORS

Inflation
 Location Quotient
 Injury And Illness

HELP

Help & Tutorials
 FAQs
 Glossary
 About BLS
 Contact Us

INFO

What's New
 Careers @ BLS
 Find It! DOL
 Join our Mailing Lists
 Linking & Copyright Info

RESOURCES

Inspector General (OIG)
 Budget and Performance
 No Fear Act
 USA.gov
 Benefits.gov
 Disability.gov

[Freedom of Information Act](#) | [Privacy & Security Statement](#) | [Disclaimers](#) | [Customer Survey](#) | [Important Web Site Notices](#)

U.S. Bureau of Labor Statistics | Postal Square Building, 2 Massachusetts Avenue, NE Washington, DC 20212-0001
www.bls.gov | Telephone: 1-202-691-5200 | TDD: 1-800-877-8339 | [Contact Us](#)